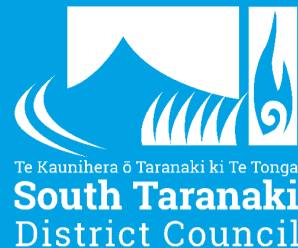


Tuia Taitonga Southlink



Be the first to know.
Download Antenna.



He karere tā te Kaunihera o Taranaki ki te Tonga News from the South Taranaki District Council

Business (Almost) as Usual While Building Strengthened

If you want to meet with a staff member, please ring us first so we can make an appointment with you.

Services at the South Taranaki District Council will be disrupted for approximately 4-6 months while the main Administration Building in Hāwera is earthquake strengthened, says Council chief executive Fiona Aitken.

Ms Aitken says from 3 December the Administration Building on Albion Street will be closed and the staff relocated to other facilities while the strengthening work is done.

Te Ramanui o Ruapūtahanga, the District's new Library, isite Visitor Information Centre and gallery on the corner of High and Regent Streets will be the temporary location for all Council related enquiries.

"All the same services will be available as before; however, we will need to do some things just a little differently," says Ms Aitken. "When customers need to see a staff member, we'll need to use video conferencing technology (Teams) or arrange for appointments to be made, because the staff will be in several different locations," she says.

While there will be a degree of disruption for the public and staff, Ms Aitken says it's nothing they can't accommodate. "Since COVID-19 we've learnt to be very flexible with how we do things and, while shifting out of the main building is not ideal, it means we can get the strengthening work done more quickly." Ms Aitken says the strengthening work is needed because the Hāwera Administration building is the District's Civil Defence emergency operations centre and needs to meet higher structural requirements than other buildings. "We need to make sure that in the event of a major disaster we are able to use this building as our base of operations as well as continue to deliver our business-as-usual activities to our communities."

From 3 December go to Te Ramanui o Ruapūtahanga on the corner of High and Regent Streets for all Council related matters or ring 278 0555 or 0800 111 323 to set up a meeting.

Reminder

Hāwera LibraryPlus

The Hāwera LibraryPlus is temporarily closed and will reopen in its new home of Te Ramanui o Ruapūtahanga (corner of Regent and High Streets) from 1pm on Monday 25 November. The old Hāwera LibraryPlus building will remain closed to the public.

isite + AA Services

The South Taranaki isite Visitor Information Centre and AA Services is temporarily closed from Wednesday 20 November and will reopen in its new home of Te Ramanui o Ruapūtahanga (corner of Regent and High Streets) from 1pm on Monday 25 November. The old isite building will remain closed to the public.

Safe to Swim? Check first...

Taranaki residents are being urged to be cautious around rivers, with potentially toxic cyanobacteria detected earlier in the season than usual.

The Taranaki Regional Council (TRC) has found exposed mats of cyanobacteria in four rivers—the Manganui, Waingongoro, Kaūpokonui and Waiwhakaiho rivers—raising health concerns for both swimmers and pets.

Cyanobacteria, also known as blue-green algae, is a naturally occurring algae that often grows in rivers on rocks as thick brown or black mats. It has the potential to pose significant health risks to both humans and animals. When these mats become exposed on the edges of rivers, they can have a distinctive, unpleasant smell, often described as musty or swampy.

TRC Water Quality Scientist Angela Collins says if you see these mats, it's safest to stay out of the water and keep a close eye on children and pets.

"This is earlier than we typically expect to find cyanobacteria in our rivers and is likely due to the drier winter we had - heavy rainfall and high water flow help to flush cyanobacteria."

The TRC is closely monitoring cyanobacteria levels at selected rivers and lakes as part of its Can I Swim Here? programme, which began this week and runs through until March.

"As we kick off the Can I Swim Here? programme, we want to encourage everyone to be mindful when planning a swim—and



to check if it's safe before you head out."

Water is also tested for E. coli at freshwater sites and enterococci at coastal sites.

Ms Collins says any time water doesn't look or smell right, it's safest to stay out.

If you come into contact with water contaminated with cyanobacteria, wash it off with clean water as soon as possible. If ingested, contaminated water may cause nausea, vomiting, diarrhoea, abdominal pain and, in more serious cases, liver or kidney damage. If you experience any of these symptoms, contact your doctor immediately.

For more information on the Can I Swim Here? monitoring programme, go to www.lawa.org.nz/explore-data/swimming.



Be the first to know.
Download Antenna.



He karere tā te Kaunihera o Taranaki ki te Tonga News from the South Taranaki District Council

First Steps Completed in Waverley Town Revitalisation

Waverley celebrated a major milestone in its ongoing revitalisation project on Tuesday 29 October, with a blessing ceremony for the recently completed section of the new town belt multi-use pathway. This event brought together community members, local iwi and Council representatives to celebrate the work to make the town more vibrant, managed by the South Taranaki District Council in partnership with the Waverley Co-Design Group. The Town Belt pathway, of which the first 1.5km section has been completed, will ultimately link Aotea Park to Dallison Park in a 5km loop, creating a community-focused space for pedestrians and cyclists.

Plans are now underway to extend this via a boardwalk pathway in a restored wetlands area to the east of Dallison Park. Upgrades to State Highway 3 (SH3), including four pedestrian refuge crossings, a decked area, new rubbish bins, and improved lighting have also been completed as part of the larger town revitalisation project.

Council's Community Development Manager David Pentz says the blessing marked not only the project's achievements to date, but also the spirit of community and cultural acknowledgement driving Waverley's transformation.

"As Waverley continues to grow, these projects serve as both enhancements to safety and quality of life and symbolise the town's shared vision of a connected, vibrant future," says David.



He says the Waverley revitalisation work is just one of a number of projects the Council is undertaking in townships across the District. "One of the Council's key social and economic initiatives is to improve vibrancy, amenity and connectedness in Waverley, Pātea, Eltham, Manaia and Ōpunakē town centres. There is a \$10.6 million budget over several years to do this work, which has been funded from our Long Term Investment Fund fluctuation reserve, so there is no direct impact on rates to do these projects."



Pātea Centennial Bursary now open

Applications for the Pātea Centennial Bursary are now being called for. This bursary is available to eligible applicants for their first four years of tertiary study. Applicants must:

- Have a permanent address within the Pātea Ward for the past two years;
- Be over the age of 15 years;
- Be enrolling for full or part-time study; and
- Present themselves for an interview when required.

Applications are now open and close on Saturday 30 November 2024 at 4.30pm. Interviews are scheduled to take place on Thursday 12 December 2024.

Application forms are available from the Waverley or Pātea LibraryPlus, on the Council's website, www.southtaranaki.com/pcb, or phone 0800 111 323 and request an application form. For further information please contact us by email funding@stdc.govt.nz or call us 0800 111 323.



Welcome to our new New Zealand citizens!

Congratulations to our new NZ citizens, who officially received their citizenship from Mayor Phil Nixon at a ceremony in the Council Chambers last week.

Upcoming Meetings

Policy and Strategy Committee
Monday 25 November, 1pm

Extraordinary Council
Hāwera to Normanby Strategy and Statement of Proposal,
Monday 25 November, 3pm

Ordinary Council
Monday 9 December, 4pm

District Plan Committee
Wednesday 18 December, 10am
Camberwell Lounge, TSB Hub, Hāwera

Unless specified, meetings are held in the Council Chambers, Administration Building, Albion Street, Hāwera.

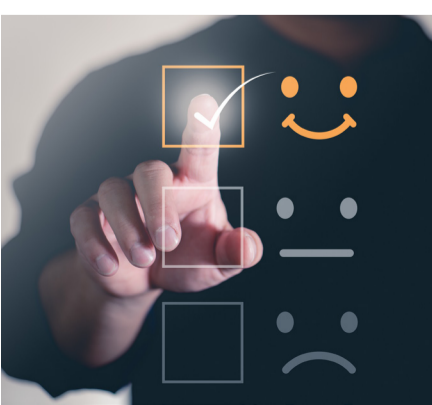
Rates reminder

Ratepayers are reminded that the last day for payment of the second instalment of rates for 2024/25 without incurring a penalty will be Wednesday 27 November 2024.

Registrations Open for this year's Arts in the Park



Do you want to secure a stall at this year's Arts in the Park on Saturday 7 December? If so, get those registrations in as soon as possible. Visit www.southtaranaki.com/artsinthepark to fill in an online registration form, or call our events co-ordinator on 0800 111 323.



Customer Satisfaction Survey

Every year we survey a randomly selected sample of our residents and those who have told us in previous surveys that they are happy to take part again. Key Research, a survey company, carries out the survey for us so we can find out how South Taranaki residents feel about things like the services we deliver, contact with the Council, where we're doing well and where we could do better. The survey is done in three stages, or waves, throughout the year, in August/September, November and February. Residents receive a letter inviting them to complete the survey and there's a QR code and a

link to complete the survey online. If you receive a letter and prefer a paper copy, you can get one by ringing Key Research on 0800 501 015.

A stage of the annual residents' satisfaction survey is happening during November and you may have already received a letter if you have been selected to take part in the survey. We'd like to know what you think, so reminder letters will be sent shortly. Everyone who completes the survey goes into a draw to win a supermarket voucher valued at \$250.