



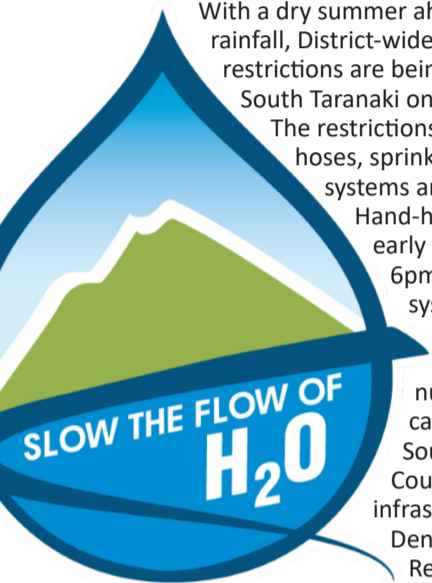
Be the first to know.

Download Antenno.



He karere tā te Kaunihera o Taranaki ki te Tonga News from the South Taranaki District Council

Partial Water Restrictions being introduced on Saturday 18 January



With a dry summer ahead and low rainfall, District-wide odds and evens water restrictions are being introduced across South Taranaki on Saturday 18 January.

The restrictions mean all unattended hoses, sprinklers and irrigation systems are banned.

Hand-held hoses may be used early in the evening (after 6pm) on the odds and evens system (at even-numbered houses on even calendar dates, and odd numbered houses on odd calendar dates).

South Taranaki District Council group manager infrastructure services Herbert Denton says new Taranaki Regional Council consent conditions, which have

The limited rainfall the District received over winter and spring has also had an effect and ground moisture levels are low.

"We are now in the position of needing to implement these partial restrictions to ensure that we have enough drinking water to go around and protect the health of our streams and rivers," says Herbert.

"Residents need to limit non-essential water use wherever possible and help us by looking for, and fixing, any leaks on your property or farm. All water savings can make a difference." The restrictions will be in place until further notice.

Ways to help conserve water include:

- Do not water your lawns
- Take a shower instead of a bath, but make them short
- Fix any leaks and dripping taps
- Use full loads to wash your clothes and dishes
- Reduce how often you wash your cars and boats
- Do not hose down driveways or buildings, sweep instead

Report any leaks on the public system to Council so we can have them fixed, phone 0800 111 323.

You can visit www.southtaranaki.com/waterconservation for easy tips and tricks of how you can conserve water in the home and garden.

a greater focus on preserving the health and vitality of our streams and rivers, require us to introduce restrictions if these drop to a certain level.

Upcoming Meetings

Public are welcome to attend

Te Hāwera Community Board
Monday 27 January, 11 am
Normanby Recreation Centre,
99 Ketemarae Road, Normanby

Pātea Community Board
Monday 27 January, 4pm
Hunter Shaw Building,
29 Victoria Street, Pātea

Eltham-Kaponga Community Board
Wednesday 29 January, 10.30 am
Kaponga War Memorial Hall,
57 Victoria Street, Kaponga

Taranaki Coastal Community Board
Wednesday 29 January, 2.30pm
Sinclair Electrical and Refrigeration
Events Centre, 156 Tasman Street,
Ōpunake

District Licensing Committee
Thursday 30 January, 10am,
Southern Lounge, TSB Hub

Policy and Strategy Committee
Monday 3 February, 1pm

District Plan Committee
Wednesday 5 February, 2pm
CANCELLED

Environment and Hearings Committee
Wednesday 5 February, 4pm

Te Kāhui Matauraura
Wednesday 12 February, 10am

Unless specified, meetings are held at Camberwell Lounge, TSB Hub, Camberwell Road, Hāwera

Popular New Zealand entertainer and singer Hollie Smith will be bringing our premier Park to life with her power packed show. One of our popular annual summer events, Concerts in the Park, is returning to King Edward Park in Hāwera on Saturday 25 January 2025.

Entertainment will begin with duo Nana & Petal (Paul Adams and Celine Filbee) kicking things off at 4pm, and the main act will take the stage at about 5.15pm.

Hollie Smith is a singer, songwriter, and performer. Her incredible live performances and powerhouse vocals have made her one of the most sought after acts in the New Zealand music industry. She is best known for her song 'Bathe in the River' and

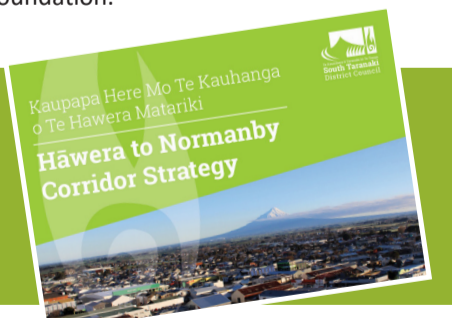
'Whakaaria Mai'. South Taranaki District Council Events Coordinator Alysha Judson says she looks forward to hearing the well-known artist's songs reverberate around King Edward Park.

"We hope families and whānau take the opportunity to enjoy this free event relaxing at this beautiful venue," says Alysha. "We encourage those attending to make an evening of it by bringing along a picnic or buying something from the food vendors we will have available."

This free event is proudly brought to you by the Council and supported by the Toi Foundation.

Tell us what you think about the Hāwera - Normanby Corridor Strategy

Visit the Council website at www.southtaranaki.com/consultation or Te Ramanui o Ruapūtahanga (Hāwera's new LibraryPlus) or the Eltham LibraryPlus for submission forms.



Applications Open for Sport NZ Rural Travel Fund



Applications for the Sport New Zealand Rural Travel Fund are now open and close on Sunday 16 February, 5pm. South Taranaki District Council community funding administrator Kristy Logan says applications to the Sport NZ Rural Travel Fund can be made by sports club teams and school club teams in South Taranaki, whose members are aged between 5 and 18 years. "The fund is available to support those in

South Taranaki communities with financial assistance for transport so that they can participate in local sports competitions," says Kristy. Further information and application forms can be found online at www.southtaranaki.com/funding, at Te Ramanui o Ruapūtahanga (121 High Street Hāwera), from your local LibraryPlus or by emailing funding@stdc.govt.nz.



Can I swim here?

People heading to our lakes, rivers and beaches this summer are encouraged to first check whether the water is safe to swim in. Weekly results and warnings are available on www.trc.govt.nz/can-i-swim-here. As a rule of thumb you should always avoid swimming for three days after heavy or prolonged rainfall. If the water doesn't look or smell right, it's safest to not enter the water.