

Te Tohu a Toi

STATE OF THE ARTS

South Taranaki Arts Bulletin # 55

Winter 2024

| [Art News](#) | [Opportunities](#) | [Exhibitions](#) | [Art Events](#) |

Welcome to our Winter edition of *State of the Arts*.

I hosted some fun workshops during the last school holidays, to celebrate World Book Day. Kids from Pātea and Waverley communities created and hand-bound their own books, experiencing the buzz of self-publishing.

South Taranaki Empower Youth recently held a design competition for a new mural to brighten up a dull concrete wall at Hāwera Skatepark. It was great to attend their decision-making hui to choose the final design, which eventuated in a compilation of elements from a few youth artists. With some guidance on materials and painting process, they were on their way! A great result.

Creative Taranaki recently held a Funding 101 Workshop at The Village Gallery, Eltham. Funding guru Valerie Barraclough helped to harness the energy and focus on funding objectives and outcomes, with key guidance on where to seek support and how to go about it. Ongoing, there is a need to support artists and groups to submit Creative New Zealand and Creative Communities funding applications, with many artists and groups currently on the journey to seeking financial support to achieve their goals.

The Big idea - our leading online resource for the arts in Aotearoa - recently launched a series of new learning resources for artists. Mentors provide supportive advice and guidance for artists, on topics such as finding audiences, self-management, writing an artist bio, building community and helpful interviews with established artists. I encourage you to have a look at the free short video resources on the website, I found some of them really helpful for my own art practice.

Please continue to support our galleries, groups, projects and events. Thanks for your positivity, commitment and vision to keep the arts alive and thriving!

Feel free to get in touch with me via email if you need advice or support with funding applications or help to realise a creative project in your town or community.

Ngā mihi,



Michaela Stoneman | Arts Co-ordinator | South Taranaki District Council |
0800 111 323 michaela.stoneman@stdc.govt.nz | www.southtaranaki.com



Above: Empower Youth members painting their new mural at Hāwera Skatepark

South Taranaki Creative Communities Funding

The last application round for the South Taranaki District Creative Communities Scheme (CCS) was well subscribed with a total of \$34,446.99 requested in funding. The South Taranaki CCS Committee is comprised of representatives from South Taranaki Community Boards, our local arts community, Iwi and Youth. A total of \$15,955.06 was allocated to these projects:



- Catherine Sheard - Art Journal Classes:** Art journal classes in Hāwera and Waverley for adults and older teens - \$2,000
- Patricia Kelly - More Fun with Printing:** Kids workshop to enable learning of screen printing - \$1,000
- Zeal Education Trust - Musicians Lounge:** A youth-led event providing the opportunity for aspiring young artists and bands to perform with audience - \$500
- Jack It Up Events - Checkerboard Lounge Workshops:** Six workshops with Melbourne-based musicians - \$1,740
- Russell Standing - Theatre Directors Workshop:** Directors workshop for aspiring theatre directors - \$1,500
- Tamarongo - Mai Ranoa:** Māori mural painted on our Kura building - \$1,500
- Gallery Pātea - Echoes from TACO:** An exhibition of work by the Taranaki Artist Collective (TACO) from the 1980s and today and a series of hands-on workshops - \$1,316
- South Taranaki Creative Space - Painting & Mixed Media Workshops:** Acrylic/watercolour painting & mixed media, including 3D workshops - \$4,239
- Hāwera Repertory - Junior Drama Festival:** Workshops for stagecraft and performance for school-age children - \$660
- Every Body Is A Treasure Trust - Finding Venues Experience – (Film – Exhibition – Workshop):** Photoshoot celebrating the diversity of the female form, Projected Exhibition, Collection of body stories for future projects - \$1,500

The South Taranaki Creative Communities Scheme provides funding assistance for community-based arts activities in South Taranaki that meet one or more of the following funding criteria:

- **Broad community involvement** - A project that will create opportunities for local communities to engage with and participate in arts activities.
- **Diversity** - A project that will support the diverse arts and cultural traditions of local communities, enriching and promoting their uniqueness and cultural diversity.
- **Young people** - A project that will enable and encourage young people (under 18 years) to engage with and actively participate in the arts.

The next South Taranaki District Creative Communities application round will open on 30 July 2024, and close on 30 August 2024. If you have an idea for a project or would like support with your application, you can email STDC Arts Coordinator Michaela for support.

For detailed information and forms, please visit the link [here](#)
Any enquiries to discuss an application, email funding@stdc.govt.nz or phone 0800 111 323 or 06 278 0555

Lysaght-Watt Trust Ronald Hugh Morrieson Literary Awards 2024

Free Open/Adult Writing Workshops 2024

Short Story: 9.00 am - 12 noon, Saturday 15 June 2024, Te W'anake/The Foundry, High Street, Hāwera

Poetry: 9.00 am - 12 noon, Saturday 22 June 2024, Te W'anake/The Foundry, High Street, Hāwera

Entries Open: Thursday 13 June 2024



The judges for the Lysaght Watt Trust Ronald Hugh Morrieson Literary Awards 2024 have been announced. Taranaki-based writer David Hill is the Short Story Judge. Hill is a prolific and highly regarded New Zealand writer, playwright, poet, columnist, and critic. Best known for his highly popular and award-winning body of work for young people, ranging from picture books to teenage fiction, his novels have been published all around the world and translated into several languages. His short stories and plays for young people have been broadcast here and overseas. Tracey Slaughter is the Poetry Judge for this year's competition. Tracey is a poet, fiction writer and essayist from Aotearoa New Zealand. Her work has received numerous awards including the Manchester Poetry Prize 2023, the Fish Short Story Prize 2020, and the Bridport Prize 2014. She teaches at University of Waikato, where she edits the journals *Mayhem* and *Poetry Aotearoa*. Her recent books are *Devil's Trumpets* (2021) and *Conventional Weapons* (2019) and her latest collection *The girls in the red house are singing* comes out later this year. She is currently working on a collection of personal essays and collaborating with Liam Hinton on a screenplay adaptation of her novella *The Longest Drink in Town*. Taranaki Daily News editor Matt Rilkoff will judge the research section.

For workshop bookings, please contact your local LibraryPlus, email entries@stdc.govt.nz or phone 0800 111 323.

Website: [Lysaght-Watt Trust Ronald Hugh Morrieson Literary Awards - South Taranaki District Council](#)

Takurua - Winter Legends in South Taranaki

South Taranaki Libraries are launching into winter with a reading programme that gives children the chance to collect Taniwha trading cards every time they use their local LibraryPlus. There are 15 Taniwha Trading cards to collect by completing various. Visiting your local library and issuing books, drawing your taniwha, and attending one of our LibraryPlus activities are just a few of the ways tamariki can earn cards.

Takurua Toa, Winter Legends launches on Tuesday 4 June and runs throughout winter until 31 August. The programme is free and aimed at children 5 – 12 years. *Takurua Toa, Winter Legends* has been adapted from the Far North District Libraries Summer Legends Programme, Raumati Toa. Community Outreach Librarian Katherine Bosworth says “We were fortunate Far North Libraries shared with us their hugely successful programme and have allowed us to adapt it to suit our South Taranaki community. This is the first time South Taranaki District Libraries have run a winter reading programme for children and it really is something quite special. There are 15 cards to collect, 12 common and 3 super rare. Each card will be enclosed in its own mystery envelope to add to the surprise! The aim of the programme is to collect a full set of cards which will be available at any of the seven libraries in South Taranaki.”

Raumati Toa was devised by Ange Simonsen, Team Leader for Kaitiaki and Kaeo Libraries, with support from Whina Te Whiu, Manager for Te Ahu Museum and Archives.



Taranaki National Art Awards 2024

Sinclairs Event Centre, Tasman Street, Ōpunakē

Entries Close: Friday 6 September 2024

Awards Ceremony: 6.00 pm Friday 1 November 2024

Exhibition: 10.00 am - 4.00 pm, 2 - 10 November 2024

The TNAA aims to provide an exceptional visual art experience that encourages participation within a diverse range of creative mediums. The exhibition is a platform for artists to express their unique vision and voice, showcasing themselves to an appreciative public audience. In doing so we are fostering positive relationships, creative networks and cultural diversity, which in turn provides support and encouragement to the creative community.

Co-judges for 2024 are Taarati Taiaroa (Te Ātiawa, Ngāti Tūwharetoa, Ngāti Apa) is Assistant Curator Contemporary Māori Art at the Govett-Brewster Art Gallery Len Lye Centre, and Aaron Lister, Senior Curator (Toi) at City Gallery Wellington Te Whare Toi.



Winner of 2023 Taranaki Artists Award, Jasmine Middlebrook

Entries are now open for this national visual arts competition – the 22nd year of this iconic annual event, held in Ōpunakē. Cash prizes are offered in seven categories: Painting, Taranaki Artists, 3D, Works on Paper, Fibre Art, Tō Taranakitanga and Photography. Entry is \$25 per artwork; artists can only enter each category once but can enter up to three categories. This long-standing event would not be possible without the generous support of sponsors and the Ōpunakē community. All entries are displayed in the exhibition and most works are for sale, offering a unique opportunity to purchase original artworks. The exhibition coincides with the region's garden festivals and the Taranaki Arts Trail. Artists can enter online. Check for updates and news on Facebook.



Winner of 2023 To Taranakitanga Award, Jordan Quinnell

The committee looks forward to collaborating with co-creatives who colour the event with a local flavour – Ōpunakē Floral Art Group, Ōpunakē Players, Ōpunakē High School Art & Music faculties, the Ōpunakē Business Association, Ōpunakē Yarn Bombers and the amazing team of 80+ volunteers.

The next TNAA committee meeting is on Wednesday 26 June, 12.30pm at Sinclair Electrical & Refrigeration Event Centre, Ōpunakē. Feel free to come along and contribute if you're keen to be involved. Contact Megan (027 500 7722) or Candace and Natasha (027 249 1620) for more information.

**Facebook: [Taranaki National Art Awards](#) | Email: contact@taranakiartawards
Please visit the website to find out more and enter: www.taranakiartawards.co.nz**

Creative Taranaki Trust News

Creative Taranaki Arts Co-ordinator Megan Symons has been busy meeting artists, arts groups, organisations and businesses throughout the region, energised by the arts, culture and creativity. "You're invested, putting in the time and mahi to ensure your creative visions are vibrant and visible, sharing stories and perspectives throughout the region, vital to the enrichment of our local communities. Please get in touch if you haven't already as I'm always keen to discover and learn more about the many unique threads that create Taranaki's thriving arts sector."

Creative Taranaki is seeking input and planning for stakeholder hui in Spring. The plan is to circle the maunga, share strategic plans, and find out perspectives and priorities from the creative community.

Creative Taranaki has been active in the funding space, providing free one-hour Funding Clinics with funding guru Valerie Barraclough. These will be offered again in July/August to align with the next round of Creative Communities funding for the three District Councils: NPDC 29 July – 25 August, STDC 30 July – 30 August, Stratford DC 19 August – 4 October 2024.

Megan is based at Venture Taranaki, New Plymouth every Wednesday, from 9.30 am - 4.30 pm. She is also available to connect in Coastal, Central and Southern areas on Tuesdays & Thursdays - please send an email to organise a meeting.



For more information and updates - [Facebook: Creative Taranaki](#) | [Website: www.creativetaranaki.org](#)
[Email: trust@creativetaranaki.org](mailto:trust@creativetaranaki.org) | megan@creativetaranaki.org



Matariki Whakairo

Matariki Whakairo is a new South Taranaki venture, founded by Jordan Berry and Meka Mauriri. Trained in the art of whakairo (Māori wood carving) at Te Wānanga o Aotearoa, Matariki Whakairo are dedicated to give back to the Taranaki community. Commissions welcome to create custom carvings for a variety of occasions, including birthdays, awards, graduations, weddings, 21st birthdays, farewell gifts, businesses, schools, kapa haka groups, marae, iwi, and hapū. Additionally, they offer whakairo classes in Hāwera for people interested in learning this traditional art.



To enquire about services or classes, please visit 'Matariki Whakairo' social media pages.

[Instagram: Matariki Whakairo](#) | [Facebook: Matariki Whakairo](#)



South Taranaki Creative Space

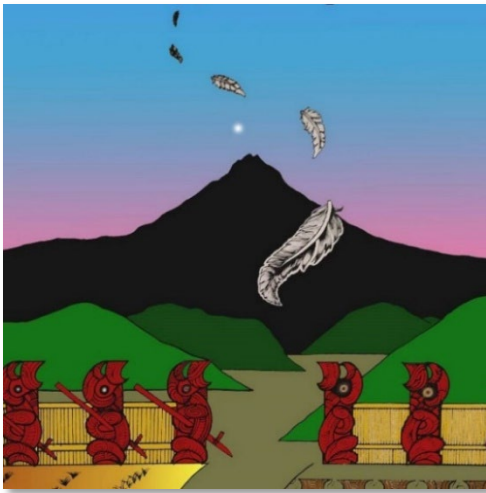
South Taranaki Creative Space is a community-focused creative hub in the Hāwera CBD, providing a welcoming space to meet, interact, learn new skills and network with other creative people. The *Community Unity Gallery* has exhibitions changing monthly. Up to two artworks per artist, \$5 koha hanging fee, no commission taken on sales. All welcome - please get in touch to exhibit, join a class or book a workshop.

Creative After-School Kids Art Classes: Weekly, Monday - Thursday during school terms.

Classes cover a wide range of mediums to help young creatives with their artistic development by exploring different ideas and techniques. Designed for students who have a genuine interest in learning art and creativity and attend regularly.

Mondays:	12 - 15 years	3.30 pm - 5.00 pm
Tuesdays:	10 - 12 years	3.30 pm - 5.00 pm
Wednesdays:	8 - 10 years	3.30 pm - 5.00 pm
Thursdays:	5 - 7 years	3.45 pm - 5.00 pm
Creative Adults Art - Beginners:	Thursdays 6.30 pm - 8.30 pm	
Creative Adults Art - Experienced:	Tuesdays 6.30 pm - 8.30 pm	
Creative Holiday Programmes:	For children and families during school holidays.	

Facilitators: [Carl Fairweather and Erryn Willcox](#) | 41 Princes Street, Hāwera | Phone or text: 027 361 6930
[Facebook: South Taranaki Creative Space](#) | Email: southtaranakicreativespace@gmail.com



Parihaka Puanga Kai Rau Festival 2024

6.00 am - 10.00 pm Saturday 8 June 2024

Parihaka Papakāinga, 249 Mid Parihaka Road, Parihaka Pā

Nau mai, haere mai. Celebrate the Māori New Year at Taranaki's iconic home of peace. Annual festival acknowledging the Māori New Year in South Taranaki. Activities include karakia, waiata, poi, mahi (work) in the maara (garden) and fun for kids. Enjoy a bonfire and evening concert of local musicians. Bring gumboots, warm clothes and raincoats, especially for tamariki and kaumatua. Bring a torch and garden tools and musical instruments to jam around the fire. The event is family-friendly, alcohol and drug-free. Shared kai from the maara - feel free to contribute. The organisers encourage carpooling to reduce emissions.

For more information visit: [Parihaka Puanga Kai Rau Festival on Facebook](#) or www.puanga.com

Hāwera Winter Fest 2024

5.00 pm start – Thursday 27 June 2024

Put your winter coats on and enjoy this free community event by Bizlink Hāwera Winter Fest. A night to celebrate with quirky acts, music, and late-night shopping. The Normanby and District Lions oversee lit braziers throughout the High Street so you can enjoy roasting marshmallows on a stick with your family. Businesses will be open late offering something special to those who venture out on the night. Bring the family along and enjoy the community vibe, sparkly dress-ups encouraged!

Revive the Live Te Hāwera Talent Quest 2024: Hāwera Town Square

Three categories: 11 and under, 12-18 years and 18 and over with Bizlink sponsoring the winners.



For enquiries email: talentquest@revivethelive.net



Hāwera Memorial Theatre Trust – Variety Show

Russ Standing will direct a Variety Show, *Performers Unlimited* in November 2024, performed at Hāwera Memorial Theatre.

Performers of all walks and genres are invited to be part of this fundraising show for the Trust - singers, musicians, magicians, comedians, puppeteers, circus acts, dancers, bands. This show is all about variety, so bring your talents to the stage to perform. The shows welcome new and experienced performers of all stages and experience. All proceeds will raise funds for the Theatre Trust, to continue to provide an exceptional theatre facility in South Taranaki.

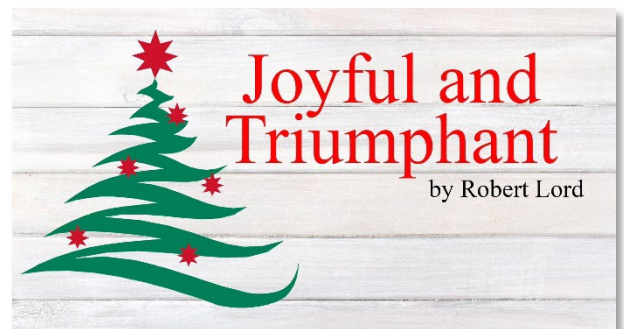
For more information contact: Russ Standing - russellss@xtra.co.nz - or phone Russ on 027 242 3904

Hāwera Repertory News

Written by Robert Lord and directed by Clive Cullen, this award winning play is rich in insight, humour and pathos, encapsulating four decades of social change in post-war New Zealand from the 1940s to the 1980s. Set in the dining room of the Bishop home in a small country town in New Zealand. Scenes take place on Christmas Day, from early evening to late evening, from 1949 to 1989.

Congratulations to the cast of Joyful & Triumphant: Cherol Filbee, Carole Hosie, John Bouzaid, Kathryn van Gammeren, Kate Paris, Louisa Bouzaid and Ron Scott.

Performances 2-10 August 2024 at Repertory House, Tickets on sale soon from iTICKET and South Taranaki i-SITE.



Facebook: [Hāwera Repertory Society](#) | Email: info@Hawerarep.org

Taranaki Singer Songwriters Events 2024

Friday 19 July: Singer Songwriters at Hāwera Repertory Theatre, Hāwera

Friday 6 September: Singer Songwriters at Percy Thomson Gallery, Stratford

Friday 4 October: Singer-Songwriters at the Lakeside Playhouse, Ōpunakē



Taranaki singer-songwriters present events where local songwriters and musicians entertain local audiences. If you play music, write your own songs, want to become more confident on stage or meet up with other musicians then this event is for you. Get ready for the second round of the Taranaki Singer Songwriter events this winter, returning with more music and creativity. Following the hugely successful first series, TSS are excited to return to these great venues. Entry is free, offering a fantastic opportunity for musicians to showcase their talents and for audiences to enjoy local artistry.

Musicians are encouraged to sign up through the website at www.taranakisingersongwriters.com, where they can also find more details about the events. Don't miss out on these vibrant gatherings of music and community!

For more information contact manellaproductions@gmail.com | Facebook: [Singer Songwriters New Plymouth](https://www.facebook.com/SingerSongwritersNewPlymouth)

Checkerboard Lounge from Melbourne - Gig & Workshops

Checkerboard Lounge - Live Gig

Sunday 30 June 2024, Repertory House, 59 Collins Street, Hāwera

Tickets: \$15 on the door

From deep in the veins of Melbourne's music scene, Checkerboard Lounge is a cult-like institution. Singer, songwriter & drummer Carl Pannuzzo, will be joined on stage by the cream of Australia's talent, guitar master Shannon Bourne & Hammond virtuoso Tim Neal. The band has evolved over thirty years; breathing fire, virtuosity & improvisation into blues, soul & roots. From standing ovations at festivals to crammed inner Melbourne pubs, no two shows are the same. Vibrant & unforgettable, Checkerboard are a tour-de-force demanding



honesty, integrity & truthful musicianship; the very essence of a live music experience. Ever since their famed seven-year residency at Melbourne's Great Britain Hotel in the early 90s, many musicians have cut their blues teeth with the fire of this band's energy. Checkerboard's point of difference had always been playing with different musicians & throwing them into an improvisational hot-seat. Over the years, band members have included Australia's best blues exponents, such as Rev. Mick O'Connor, Ian Collard, Jeff Lang, Broderick Smith, Steve Teakle, Richard Tankard, Andrew Ogburn, Garrett Costigan, Nigel MacLean & Dave Boyle (USA).

Workshops: Sunday 30 June 2024, Hāwera Repertory Rooms – from 10.00 am, FREE:

THE SOUL OF THE SONG: In this workshop, singing drummer Carl Pannuzzo offers keys to singing the blues and roots stylings with genuine soul and tools to improvising freely.

VOICE MASTERCLASS: Carl Pannuzzo invites you to bring your all to this evolutionary masterclass. Beyond techniques, your nature meets the mind of music to give you a 1000% expansion to your capacity as a vocalist, expressionist and communicator.

DRUMS IN ROOTS: Carl Pannuzzo shares on getting the best out of the drumkit for optimum feel and groove, exploring the theme of drums as an instrument of choice for backline, and as an inventive and lead instrument.

GUITAR UP CLOSE: Shannon Bourne shares his wealth of erudite guitar techniques, acoustic and electric, tips for sensitive and dynamic playing to the toughest attack, also essentials to great, tasteful rhythm playing.

ESSENCE OF THE BLUES: Shannon Bourne takes a deep dive into the depths of the style at the root of most modern music.

ROLE OF THE ORGAN IN CONTEMPORARY MUSIC: Hammond virtuoso Tim Neal explores the breadth of styles and playing techniques that define modern organ.

Bookings essential for these free workshops. Supported by South Taranaki Creative Communities Scheme.

Contact Celine Filbee at Jack It Up Event Management to book – Email jackitup@inspire.net.nz or phone 027 454 0591

Aotea Utanganui Museum of South Taranaki – Celebrating 50 Years

Aotea Utanganui 50th Anniversary Exhibition

The Museum currently has on display an exhibition about its first 50 years of operation. On Anzac Day 1974 the Pātea Museum was opened by Matiu Rata, after moving from the corner of Bedford and Egmont Streets in 1982 to its current site. In 2011 the current building was opened after renovation work was completed. The exhibition showcases collection items, past exhibitions and events with historic photographs of people who have been involved with the Museum throughout the years.



Agricultural/Transport Exhibition – Stage Two Building

Stage 2, behind Aotea Utanganui Museum, will be officially opened by Iwi members in the first week of July. The building has been constructed to house large machinery and transport vehicles in the Museum's collection, showcasing stories and information about the wide array of collection items displayed. Vehicles that were used by the Pātea Freezing Works Fire Brigade are also on show. Call the Museum to make an appointment to access this exhibition. Open days may be organised later in the year.

Waterways – Ngā Awa o Taranaki Ki Te Tonga

Aotea Utanganui Museum are extending this Taranaki Regional Council funded exhibition, including mini-documentaries of the region's waterways from Iwi. The story of the recent repatriation of a tiwai waka shows the process of Iwi connecting to taonga, and the repatriation pōwhiri hosted by Aotea rohe for Ngāti Kahungunu and Rangitāne iwi. The waka takes pride of place at the centre of the exhibition, opening in August 2024.

Keep updated on all of our events via the Museum's blog: <https://museumofsouthtaranaki.wordpress.com/>

Aotea Utanganui - Museum of South Taranaki, 127 Egmont Street, Pātea | Phone: 06 273 8354

Facebook: [Aotea Utanganui](#) | www.museumofsouthtaranaki.wordpress.com

Email: museum@stdc.govt.nz | Open: 10.00 am - 4.00 pm Monday – Saturday

Gallery Pātea – Winter Exhibitions



Echoes from TACO: Until 8 June 2024

A selection of hand-printed posters and ephemera from a private collection from the base of this exhibition. In the 1980s, the dynamic Taranaki artist collective 'TACO' were active in running a series of exhibitions, among them, the annual 'Renonsense'. Both collage and constructed works, made up of seemingly random items combine to present an opinion, philosophic thought, or story. An interactive space will be set aside for visitors inspired by the exhibition to make their own graphics with a space to show them at the gallery.

"Collage allows the opening up of conscious, which is very direct...it's also a way of looking at what you are consuming all the time" – John Stezaker. The gallery hosted a free collage workshop in May with

artist Brenda Cash and Pātea Area School students also attended a workshop, with artworks from both on display.

Group shows acknowledging Puanga/Takurua/Mahuru:

Rising Star: 12 June - 6 July 2024

Puanga is the important star we see in Taranaki heralding that special time of year when we remember the past year, assess our actions, spend time together as whanau, and prepare for the coming seasons. For some, it is the final lifting of root crops and gathering of other sustenance from the land. We give thanks and acknowledge the abundance of the whenua, at the rising of Puanga, as he 'pulls up' Matariki.

Takurua: 10 July – 3 August 2024

Takurua – Sirius the Dog Star, one of the brightest stars in the sky, and found in Kahui Takarua (Canis Major). Takurua signifies the second month of the new year - it's winter, and artists are invited to tell their stories about their most memorable winter through imagery, however, they remember it.

Mahuru: 28 August - 29 September 2024

Mahuru – September arrives and it's officially spring, the days might still be chilly, but we have longer daylight, the sap is rising, time to turn the earth, prepare seedlings, and turn our face to the sun.

Check the Gallery Facebook page for exhibition updates and future events.

Gallery Pātea, 56a Egmont Street, Pātea | Open: Wednesday – Saturday.

Winter Hours 10.00 am - 2.00 pm or by appointment

For more information text Gabrielle Belz 021 0813 8355 | Facebook: [Gallery Pātea](#) | Email gallerypatea@gmail.com

Lysaght Watt Gallery – Winter Exhibitions

Langkah: Krismarlianti

Runs until 22 June 2024

Contemporary abstract exhibition by award winning Indonesian artist now living in Manaia, South Taranaki. *Langkah* is the Indonesian word meaning 'steps', or 'to move' (physically and mentally). This retrospective exhibition will showcase Krismarlianti's ongoing artistic process, embracing the many challenges and rewards in her life and the transfer of ideas and emotions to the canvas. *'This exhibition is a reminder, self-reflection and motivation for me about myself and my art journey'*.

Ko Puanga Te Kaupapa: Toi o Taranaki Ki Te Tonga/Te Ātinga

24 June – 22 July 2024

Puanga is a time where we come together to reminisce on the year gone by and think fondly of those who have passed. It is also a time to prepare and celebrate the new year to come. This exhibition expresses the whakaaro (thoughts) of our people about Puanga through art. What this means is specific and personal to each kaimahi toi and is proudly brought to you by Toi o Taranaki Ki Te Tonga, a collective of Māori artists who whakapapa to Taranaki or live in our rohe and Te Ātinga, the national Māori arts collective.



The Power of Eight: A Group Show

24 July – 17 August 2024

A wide-ranging group exhibition that showcases eight established artists who live variously in New Plymouth, Whanganui or Levin and include Mark Raynor, Mel Fleet, Elliot Collins and others. From Waiheke Island, Riihari Warnock (Ngāti Manu me Ngāpuhi) practice centers on the natural world and reconnection with te ao Māori through large striking mainly black and white images that evoke the essence of a forest at night. From printmaking to oils, acrylics and multi-media, the exhibition will inspire art lovers as the cold winter months move towards closure.

(pictured left: *Te Whare o ngā kōkako* by Riihari Warnock)

Brush Strokes: Hāwera Art Club

19 August – 14 September 2024

Longstanding community group Hāwera Art Club comes together to present the annual celebration of their craft. Something for everyone in an exhibition presenting the group's latest oils, acrylics, pastels, pen and ink works. Club meets first Friday of the month 10.00 am – 1.00 pm, Salvation Army Hall, Hāwera, with informal group meeting every other Friday, same venue 10.00 am – 3.00 pm. Beginners to advanced artists welcome, phone Jennie Purdon 06 272 8128.

Lysaght Watt Gallery 4 - 6 Union Street, Hāwera

Website: www.lysaghtwattgallery.co.nz | Facebook: [Lysaght Watt Gallery](#)

The Village Gallery – Winter Exhibitions

At the recent Annual General Meeting of The Village Gallery, a new executive committee was elected; Chairman is Bill Davies, Secretary is Becky Dawson, Treasurer is Janine Frost-Jones and Jennifer Sosich is the Newsletter Editor and poster creator. Committee members are Jax Francis and Terri Bracey.

Land and Sea: Jennie Purdon and Frank Eustace

5 – 29 June 2024

Two Hāwera artists exhibit together, showing painted works in watercolours and acrylic. (Pictured right: *Pastoral Serenity* by Jennie Purdon)

Stratford Camera Club

3 – 27 July 2024

Club members exhibit some award-winning shots from last year.

Yvonne Geeraedts

31 July – 24 August 2024

"Creativity has always been a part of my life. Four years ago I was introduced to watercolours and was quite taken by the way colours mingle and create. I soon realised that landscapes, colours and the way light plays, are my passion. I get my inspiration from nature when I am out hiking or biking. I find inner peace and relaxation, which calms my mind, body and soul which sparks my creativity".



**The Village Gallery, 166 High Street, Eltham | Open: Wednesday – Saturday 10.00 am – 3.00 pm
Phone: 06 764 5443 | Facebook: [Village Gallery Eltham NZ](#) | Email: villagegalleryeltham@gmail.com**



Gallery at The Bank Eltham

Taranaki landscape painter Mark Bellringer is resident artist at 'The Bank' design store in Eltham. This historical building features Mark's art studio, where visitors can see him working in his distinctive style. Mark is also a professional photographer and he runs his popular 'Taranaki Tunnel Tiki Tours'.

WORKSHOP: Plein Air Oil Painting with Mark Bellringer Sunday 23 June 2024

Join Mark Bellringer for a one-day workshop painting 'Plein Air' in the hills and bush of Taranaki. Mark is an experienced tutor, having worked in tertiary education for a number of years. Mark will describe his approach to painting on location, including scene

selection, the composition, his palette and equipment and simplifying the landscape for a painting. Students can expect individual tuition and small group demonstrations. All skill levels can be catered for but ideally participants should have some fundamental experience in painting. All Taranaki locations will depend on the weather, confirmed two days prior. Minimum of 6, maximum of 12 people per workshop. Cost: \$150 each - this includes a follow-up Skype session after the workshop. Groups wanting an exclusive workshop (art groups, clubs) can be accommodated at a different date. A two-day workshop (subject to demand) in Whangamomona is also available.

51 Bridge Street, Eltham | Website: www.markbellringer.co.nz | Email: mark@markbellringer.co.nz

Open Hours: Tuesday to Saturday 10.00 – 4.00 pm – text to check

Instagram: @markbellringer | Facebook: The Bank Eltham / Mark Bellringer Artist | Phone: 027 497 4900

from out of the blue studio gallery – Exhibitions

Handle with Care – Solo exhibition by Lee-Anne Sheather

6 June - 15 July 2024

Sheather's current practice involves creating 2D and 3D textile art. These works include highly detailed fabrications that depict an imaginary construct called *Island of Woo*. These small-scale constructions are a direct response to the abundance of life she witnesses every day when she regularly explores the beach and bush reserves near her home. She pays close attention to details, which she describes as being like mini landscapes. She describes how even the smallest of space can teem with exuberant layers of life. *Island of Woo* is a visual depiction for her imagining of lively, interactive connectivity on Earth.

WORKSHOP: Woollen Freestyle Floral Cushions

10.00 am – 3.00 pm, 9 June 2024

Lee-Anne will teach some of the techniques she uses in her own art practice but in a format that creates a useable cushion. Follow [link for more details](#).



Artwork by Lee-Anne Sheather

Unravelling Uncertainties - Solo Exhibition by Karen Rubado

16 July- 26 August 2024

Just as chaos theory demonstrates the limitations of reductionist models to capture the richness of reality, "unravelling certainties" challenges us to confront the precariousness of assumptions. Immersing us in the disquieting beauty that emerges from the interplay of order and disorder, the pieces invite meditation on our struggle to find meaning and coherence in an uncertain world.

There is a wide variety of workshops on offer over winter. Check the gallery website for opportunities and to register.

Contact: Viv Davy. Phone: 021 407 424 | 18 Halse Place, Ōpunakē

Website: www.fromoutofthebluestudiogallery.com | Open: 1.00 pm – 5.00 pm Thursday – Monday or by appointment

Facebook: from out of the blue studio gallery | Instagram: threadthinker | Email: silktangles@me.com

Everybody's Theatre - Ōpunakē



A historic theatre restored to its former glory. Showing new releases and classic, foreign and fringe films. Check the website for screening and special events. Bookings can now be made online. The theatre can be hired for events.

Boutique Movie Screenings

1.00 pm & 7.00 pm - First Sunday of the month - Cheese platters and beverages available.

Everybody's Theatre, 72 Tasman Street, Ōpunakē | Phone: 027 383 7926

Website: www.everybodystheatre.co.nz | Email everybodystheatre@gmail.com

Percy Thomson Gallery – Winter Exhibitions

Rita Angus: New Zealand Modernist

Runs until 23 June 2024

Rita Angus is one of New Zealand's most iconic artists. Over the course of her life, she produced a remarkable body of drawings, watercolours, and paintings. A committed feminist, and a pacifist, Angus' work was deeply entwined with her view of the world. In her portraits and landscape paintings, with their distinctive clear colours and flat, graphic style, she created a unique image of 20th-century Aotearoa. This exhibition was developed in partnership by the Royal Academy of Arts, London and toured by Te Papa Tongarewa. *Image credit: 'Cleopatra' (1938) by Rita Angus. Oil on canvas (Te Papa Tongarewa).*

Emergence Award for Young Taranaki Artists 2024

28 June - 21 July 2024

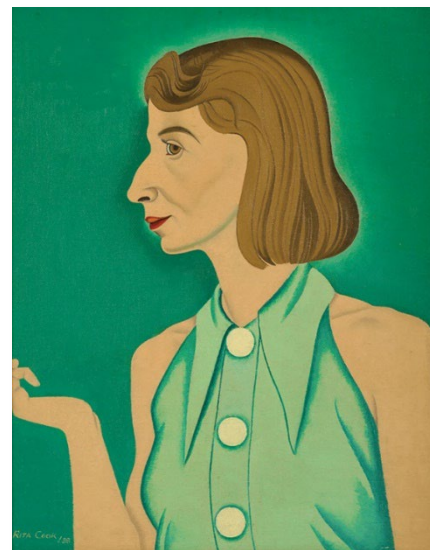
The Emergence Art Awards is an art competition and exhibition that spotlights the creative talents of young and emerging artists in Taranaki. To participate, artists must be born in Taranaki, reside in Taranaki, or have attended secondary school in Taranaki and be aged between 13 and 26 years. Our Supreme Winner from 2022, Brett Morrison will hold her first solo exhibition alongside Emergence, titled *All Four Corners*.

Taranaki Arts Trail 2024 Preview Exhibition

26 July – 25 August 2024

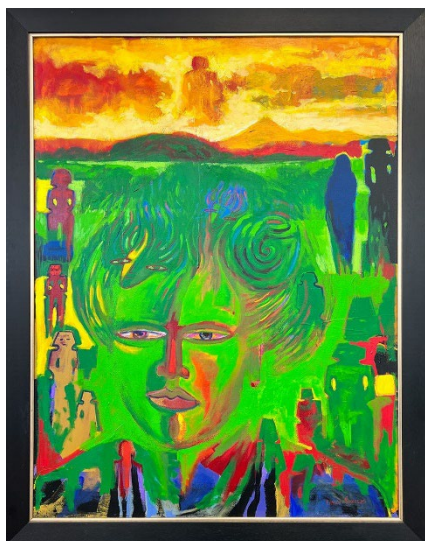
Adam Portraiture Award 2024

30 August – 13 October 2024



For gallery newsletters, member benefits, invitations to events and exhibition openings, sign up as a Friend of the Gallery. *Percy's Place* is the gallery's boutique art shop, full of creations by local artists. The Gallery is seeking volunteers to assist with running the shop - please contact the Gallery if you are keen to help.

Percy Thomson Gallery, 56 Miranda Street, Whakaahurangi Stratford | Director: Laura Campbell
Open: Monday - Friday 10.00 am - 4.00 pm. Saturday - Sunday 10.00 am - 3.00 pm | Phone 06 765 0917
Website: www.percythomsongallery.org.nz | Facebook: Percy Thomson Gallery



Waitara Artists' Exhibition 2024

Maumahara: Memories

27 - 30 June 2024

Venue: Ngāti Rāhiri Hapū o Te Atiawa Building, 38 Queen St, Waitara (next to New World Car Park)

Opening event: 6.00 pm – 8.00 pm Thursday 27 June 2024

Guest Speaker: 6.30pm, Gavin Faull (Ngati Rahiri, Te Atiawa). Owner, chairman and President of Swiss-Bell Hotel International.

The exhibition includes artists who live and work in the Waitara region of North Taranaki as well as friends and guest artists who support the promotion of visual arts as a means of uplifting and encouraging the creative endeavours of artistic expression. Artists keen to submit works for the exhibition should contact the organisers, the Waitara Artists' Cooperative before 13 June.

(pictured left: *Earth Mother* by Darcy Nicholas QSO)

Open Hours: Thursday 6.00 pm - 8.00 pm, Friday & Saturday 10.00 am - 4.00 pm, Sunday 10.00 am – 2.00 pm

Contact: Garry Nicholas: Ph 021 424 283 Email: garry@temaori.org.nz or

Dianne Hekeua Email: waitaraartists2023@gmail.com

[Sugar Loafing Arts Cast » Access Radio Taranaki 104.4FM](#) – Local Arts Podcast

[Ōpunakē Open Studios & Galleries](#) – *click to follow link*

[Coastal Art Trail](#) - *click to follow link*

Puke Ariki – Winter Exhibitions



Home Work Maunga Auaha: Taranaki Art 2024 **6 July - 19 November 2024 - Ground Floor, Puke Ariki Museum**

Taranaki art of the present moment takes centre stage in this expansive celebration of local talent. Over seventy artworks by established and emerging artists will inspire visitors and highlight the creativity that this region inspires through its natural beauty, and extraordinary history. The selection has been made by prestigious guest judges artists Lisa Reihana, Michel Tuffery and Justin Morgan of Puke Ariki, who were impressed with the range of skills and the sense of joy in the uniquely crafted pieces. View Taranaki as reimagined by our artists in paintings, photography, intricate weaving, chiselled stone and digital imagery. Explore personal stories, origins and our collective experiences, as artists contemplate what it means to be here, in this place, in these times.

Puke Ariki, 1 Ariki Street, New Plymouth | Phone: 06 759 6060 | Open: 10.00 am - 5.00 pm 7 days | Free Entry
Website: www.pukeariki.com | Facebook: Puke Ariki: Museum-Library-Visitor Information

Gover Street Gallery News

Gover St Gallery is community-driven with working studios, monthly exhibitions and is full of work by local artists and artisans. Well worth coming to visit when in New Plymouth.

Portrait Sketching Sessions: 12.30 pm - 2.30 pm Every Wednesday. No charge, no critiques and a great way to meet other creatives. Bring your materials and join in.



JUNE EXHIBITIONS

Stephen Komene: Self-taught, detailed artworks
Katrina Cosgrove: Fluid, mixed media floral work
They Struggled with the Likeness Portrait Exhibition
Tanya Paton: *Under the Mountain* - Series of intuitive artworks
Barbara Crow: Local landscapes in hand-felting
WORKSHOPS: Mandala Dotting Workshop with Mariana Melo
8 June: 10.30 am - 1.30 pm
Needle Felting Workshop for Beginners with Barbara Crow
15 June: 10.00 am – 3.00 pm

JULY EXHIBITIONS

Brett Williams: Strong local landscapes
Amber Crossman: Atmospheric artworks
Rosemary Petterson: Colourful fluid abstracts
Dawn Hickling: Assemblage art dolls

AUGUST EXHIBITIONS

Stephen Lyttelton: Eclectic artworks
Helen Griffiths: Poetry inspired artworks

19 Gover Street, New Plymouth | To exhibit, register, enquire, contact Heidi on 06 757 4278
Open: Monday – Saturday 10.00 am – 4.00 pm. Sundays 12 noon – 4.00 pm
Facebook/Instagram: [Gover Street Gallery](#) | Email: goverstgallery@gmail.com

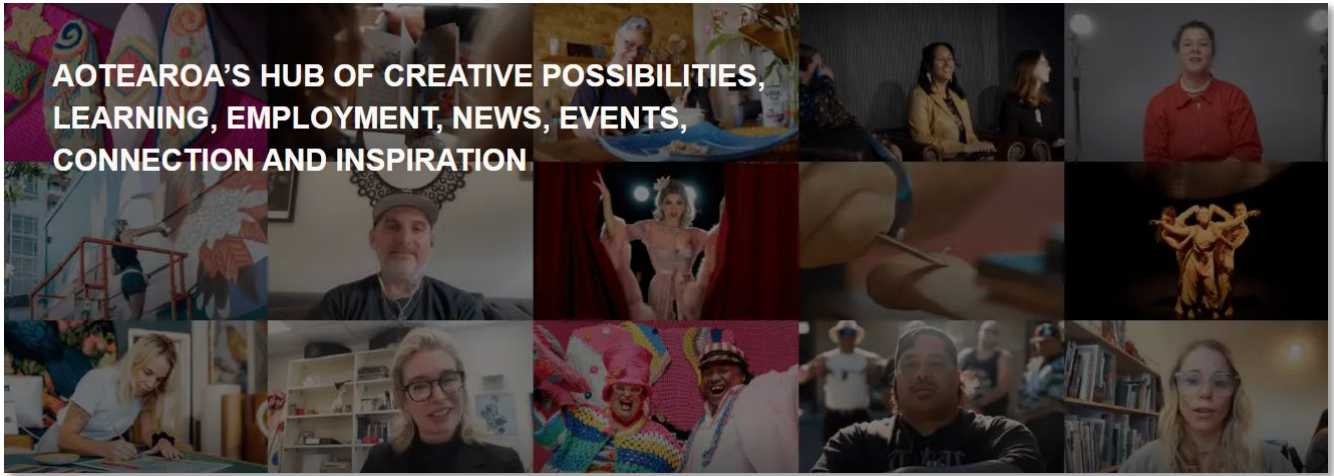
Creative New Zealand

Creative New Zealand is the national arts development agency developing, investing in and advocating for the arts. CNZ recently announced its new programmes for 2024. The eight new funding and support opportunities are tailored to three distinct groups: early career artists, artists and practitioners, and arts groups and organisations and will replace the existing contestable grants programme. If you or your art group are thinking of applying to CNZ, you can contact the STDC Arts Coordinator for support with getting started and the process to submit an application.

Visit [Funding and support](#) for more information.
[Sign up](#) to receive news and updates via email.



For updates and information on all Creative NZ funding, visit the [website](#)



The Big Idea

The Big Idea is the largest, leading online resource for the arts in New Zealand, providing artists with daily news updates, the latest jobs and opportunities and events as well as ideas and inspiration from across the creative industries to help you create your own success.

The Big Idea recently launched a series of online resources to support the arts sector.

[The Learning Network](#) is based on six years of delivering mentoring and development programmes in Tamaki Makaurau. Now TBI and partners are providing our trusted and expert resources for all of Aotearoa.



As you go through what's on offer you will experience:

- **Interviews** with outstanding creatives of Aotearoa - giving you learning from your peers
- **Learning modules** - advice from experts on core topics
- **Digital community** - where you can reach out ask the rest of the Learning Network questions
- **Resources** - leading arts organisations generously sharing their toolkits, research and advice to strengthen our sector

In the coming weeks TBI will be releasing further great content – you can sign up to Learning Network to stay connected. Due to funding received from Manatī Taonga Ministry of Culture and Heritage, the initial content is free. Jump in, enjoy, be inspired and let us know what resources and insights boost your career, as well as what further learning opportunities would make a difference.

Website: www.thebigidea.nz

Would you or your group like to have information included in the next edition of
Te Tohu a Toi – STATE OF THE ARTS?

Please send text and photographs for the Spring Edition (Sept/Oct/Nov 2024) to:
Michaela Stoneman, Arts Co-ordinator: michaela.stoneman@stdc.govt.nz

Send information by:
Publish date:

Monday 19 August 2024
Saturday 1 September 2024

To unsubscribe to *State of the Arts*, please [email Unsubscribe](#) in the subject line.