

# Te Tohu a Toi

# STATE OF THE ARTS

South Taranaki Arts Bulletin # 49

Summer 2022/23

| [Art News](#) | [Opportunities](#) | [Exhibitions](#) | [Art Events](#) |

Welcome to our Summer edition of *State of the Arts*.

The Taranaki National Art Awards celebrated 20 years in Ōpunakē this October. Attracting over 350 entries from all over the country, the Awards Ceremony hosted 250 people, with over \$16,000 in prizes awarded to artists over seven categories. The well presented and diverse exhibition attracted close to 1,000 visitors over the ten-day period and this year art sales totalled over \$30,000, actively supporting artists. The voluntary committee reach out to the community for help with the huge task of installation, manning the exhibition and packing down, resulting in thousands of volunteer hours contributed by lots of generous people. An epic milestone has been reached - my hat goes off to everyone who has dedicated time and energy to this event over the past 20 years and to all the sponsors and businesses who have supported our creative community through this event.



*TNAA Committee members pictured on Awards Night with 2022 Committee Choice winner Sarah Luttrell and her artwork, 'The Treasured Kakapo'.*

In December we will see the completion of two community art projects in South Taranaki. The **Ōpunakē Skatepark Mural Project** has resulted in a series of new public artworks, created by youth from the Ōpunakē Art Department at Ōpunakē High School. The **Waverley Pool Mural** is currently underway by Eltham artist Dan Mills, painting the design of young Waverley artist Noklair Milton from the public competition earlier this year. All of these efforts brighten our communities and create opportunities for engagement and celebration.

Please continue to support our galleries, groups, projects and events – thanks for your positivity, strength, commitment and vision to keep the arts alive and thriving. Feel free to get in touch with me via email if you need advice or support with funding applications or help to realise a creative project.

Stay safe and happy over the holiday period – all the best for the summer season!

Ngā mihi, *Michaela*

Michaela Stoneman | Arts Co-ordinator | South Taranaki District Council | 0800 111 323  
[michaela.stoneman@stdc.govt.nz](mailto:michaela.stoneman@stdc.govt.nz) | [www.southtaranaki.com](http://www.southtaranaki.com)

## South Taranaki Creative Communities Funding

The last application round for the South Taranaki District Creative Communities Scheme (CCS) was well subscribed with a total \$20,244.35 requested in funding. The South Taranaki CCS Committee is comprised of representatives from South Taranaki Community Boards, our local arts community, Iwi and Youth. A total of \$10,652.70 was allocated to the projects below:



- Jennifer Corbett – Kids Mosaic Nature Mural/Abstracts** – Individual small canvases decorated by kids from art classes with the theme of nature – \$282
- Rosanne McLeod-Oakes – Kaitiakitanga** – An exhibition of art forms inspired by and using materials from the environment celebrating Conservation week - \$435
- Theatre Trust Singers Concert “Four Choirs in Concert”** – Choir-based concert for the community - \$1,000
- Jennifer Clarkson – Mixed Media Photo Album** – To make a photo album using a variety of mixed media and photos taken by the participants - \$1,805
- Kaupokonui & District Beach Society –Beach Camp Mural** – Mural to brighten the beach camp ablution block - \$1,700
- Daphne Bland – Acrylic Painting** – Introducing and developing painting skills - \$1,200
- Everybody is a Treasure Trust – Visual Poetry Jam Workshop & Virtual Master Classes** – Day workshops for creative and artistic youth in the region, using cell phone technology to teach photography, visual storytelling, and creative critical thinking skills - \$2,780
- Ange Quinn – Celebrating Monarch Butterflies** – Spending the day with local children creating and learning about monarch butterflies - \$450
- Caryl Murray - Ohawe Art and Coffee Morning** – Ohawe residents meet and learn art skills while meeting other locals in the village - \$1,000

The South Taranaki Creative Communities Scheme provides funding assistance for community-based arts activities in South Taranaki that meet one or more of the following funding criteria:

- **Broad community involvement** - A project that will create opportunities for local communities to engage with and participate in arts activities.
- **Diversity** - A project that will support the diverse arts and cultural traditions of local communities, enriching and promoting their uniqueness and cultural diversity.
- **Young people** - A project that will enable and encourage young people (under 18 years) to engage with and actively participate in the arts.

**The next South Taranaki District Creative Communities application round will open in February 2023.**

If you have an idea for a project or would like support with your application, you can email STDC Arts Coordinator Michaela for support – [michaela.stoneman@stdc.govt.nz](mailto:michaela.stoneman@stdc.govt.nz)

For detailed information and forms, please visit the link [here](#)

Any enquiries to discuss an application, email [funding@stdc.govt.nz](mailto:funding@stdc.govt.nz) or phone 0800 111 323 or 06 278 0555



### Arts in the Park

**10.00 am – 3.00 pm Saturday 3 December 2022**  
**King Edward Park, High Street, Hāwera**

A record number of artists and groups have registered to take part in Taranaki’s premier outdoor arts and crafts festival this year. Enjoy the large, pleasant, open environment of King Edward Park to browse arts and crafts. If you are looking for that perfect Christmas gift or a new piece of art, then this is just the day for you. With everything from handmade jewellery to garden art, woodturning to knitting, there is sure to be something for everyone. *Arts in the Park* offers an entertaining day for the whole whānau, offering an opportunity to support local artists and craftspeople. Stalls with various homemade arts and crafts will be scattered throughout the park along

with a variety of food trucks and entertainment. Have a seat, pick up something to eat and soak up the vibe. Check STDC’s Facebook page for updates.

For more information contact South Taranaki District Events on 0800 111 323 or email [events@stdc.govt.nz](mailto:events@stdc.govt.nz)

# Lysaght-Watt Trust Ronald Hugh Morrieson Literary Awards 2022



The Lysaght-Watt Trust Ronald Hugh Morrieson Literary Awards were held on the evening of Wednesday 19 October, in Hāwera. This year's judges, Airini Beautrais, Robert Sullivan and Matt Rilkoff, shared their thoughts on the overall calibre of entries, along with comments about each winning piece of work. The judges noted the works were very grounded in the South Taranaki landscape and, in some instances, 'brought Morrieson right back into the room'.

## Short Story - Secondary School Section

**1st:** Rosie Butler, New Plymouth Girls' High School. **2nd:** Bethany Gyde, Hāwera High School **3rd:** Krishay Lal, Hāwera High School. **Commended:** Jordan Dawson, Hāwera High School; Sahana Larsen, Ōpunakē High School

## Short Story - Open Section

**1st:** Airana Ngarewa, Pātea. **2nd:** Emma Hislop, New Plymouth. **3rd:** Bruce Finer – Hāwera  
**Commended:** Airana Ngarewa, Pātea; Molly McDonald, Hāwera

## Poetry - Secondary School Section

**1st:** Lexi McQuaig, Ōpunakē High School. **2nd:** Bethany Gyde, Hāwera High School. **3rd:** Aria Brophy, Ōpunakē High School. **Commended:** Georgia Bryant, Taranaki Diocesan School for Girls

## Poetry - Open Section

**1st:** Airana Ngarewa, Pātea. **2nd:** Mikaela Nyman, New Plymouth. **3rd:** Michaela Stoneman, Pātea  
**Commended:** Frances Rookes, New Plymouth

## Research Article

**1st:** Hunter Quinn, New Plymouth Boys' High School. **2nd:** Tin Tin Nguyen, New Plymouth Boys' High School  
**3rd:** Jerry Wei - New Plymouth Boys' High School. **Commended:** James Anglesey, New Plymouth Boys' High School; Oliver Marsh, New Plymouth Boys' High School

A copy of the finalist's winning entries can be found in the 2022 Ronald Hugh Morrieson Literary Awards Finalist Book. You can order a copy from any South Taranaki LibraryPlus for \$5.

[Visit the website for more information](#)

## Free Summer Events in South Taranaki

**Sounds on the Sand:** Ōpunakē Beach: 14 January 2023  
**Concert in the Park:** King Edward Park, Hāwera: 28 February 2023  
**Paint Party:** Hicks Park, Hāwera : 4 February 2023  
**Skate competition:** I-Site Skate Park, Hāwera : 11 February 2023  
**AmeriCARna Ōpunakē:** Ōpunakē Beach : 22 February 2023  
**AmeriCARna Hāwera:** High Street, Hāwera : 24 February 2023

Check the STDC website or Facebook for details for these popular summer events

For more information contact Emma Vennell, Events Co-ordinator: 0800 111 323 or Email: [events@stdc.govt.nz](mailto:events@stdc.govt.nz)



## Creative Taranaki

Over the past two years a group of dedicated volunteers have been tackling each step to establish the Creative Taranaki Trust, the first Regional Arts Organisation in Taranaki.

[Sign up for Creative Taranaki Newsletter here.](#)

For more information and updates - Facebook: Creative Taranaki  
Website: [www.creativetaranaki.org](http://www.creativetaranaki.org)

# Taranaki National Art Awards 2022

The Taranaki National Art Awards celebrated 20 years in 2022, a huge achievement for the coastal South Taranaki town of Ōpunakē. Attracting over 350 entries from all over New Zealand, the exhibition showcases diverse works in seven categories, competing for a prize pool of over \$16,000. Judges for 2022 were Karl Chitham and Leafa Janice Wilson.



Winner of 2022 Painting Award, Krismarlianti Donaldson

## Painting Award

First: Krismarlianti Donaldson, Manaia  
Highly Commended: Aithnia Batchelor, Waitara and Jasmine Middlebrook, New Plymouth

## Taranaki Artist Award

First: Dev Capey, Ōpunakē  
Highly Commended: Phil Taylor, Inglewood

## 3D Award

First: Gaye Atkinson, New Plymouth  
Highly Commended: Catherine MacDonald, Whanganui

## Works on Paper Award

First: Debbie Hahn, Whanganui  
Highly Commended: Sam Dollimore, Wellington

## Fibre Art Award

First: Nic Bousfield, Whanganui  
Highly Commended: Michelle de Silva, Nelson

## Tō Taranakitanga Award

First Prize: Sapphire Csik, Christchurch  
Highly Commended: Jordan Quinnell, Palmerston North

## Photography Award

First: Nic Bousfield, Whanganui  
Highly Commended: Paul Burgham, Eltham

**Committee Choice Award & People Choice Award:** Sarah Luttrell

Visit the website for winning images and judges comments: [www.taranakiartawards.co.nz](http://www.taranakiartawards.co.nz)  
Facebook: Taranaki National Art Awards

## South Taranaki Creative Space

South Taranaki Creative Space is a community-focused creative hub, providing a welcoming space to meet, interact, learn new skills and network with other creative people. The *Community Unity Gallery* has exhibitions changing monthly. Up to two artworks per artist, \$5 koha hanging fee, no commission taken on sales.

All welcome, please get in touch to exhibit. New classes starting in 2023 and opportunities for local artists to connect.

### 2022 Student Exhibition & Fundraiser

**Sunday 18 December 2.00 pm – 4.00 pm**

All are welcome to view the art and shop for Christmas. Artwork for sale and craft stalls. The Exhibition will also be shown online in December and January.

### Creative After School Kids Art Classes: Weekly, Tuesday - Thursday

Classes cover a wide range of mediums to help young creatives with their artistic development by exploring different ideas and techniques. Designed for students who have a genuine interest to learn art and creativity and attend regularly.

Teen Art classes will return in 2023 with tutor Carl Fairweather. A great opportunity to create while learning about artists and art history. Holiday Programmes will be run for children and for families during the school holidays.

**Creative Adults Art - Beginners:** Day class Wednesdays. Time to be confirmed in January.

**Creative Adults Art - Beginners:** Thursdays 6.30 pm - 8.30 pm

**Creative Adults Art - Experienced:** Tuesdays 6.30 pm - 8.30 pm

**SATURDAY WORKSHOPS:** A great variety of regular workshops are available. Check out Facebook updates for details. Full details and the registration process will be posted on the South Taranaki Creative Space Facebook page.



## Creative NZ – Ngā Taonga Toi a Te Waka Toi Awards 2022



The 36th annual Te Waka Toi awards recognised and celebrated the artistic excellence and contribution of Māori artists working in customary and contemporary Māori arts is on the 26th November 2022. Artists from a range of creative backgrounds received awards this year for their contribution to ngā toi Māori, including Pātea artist Gabrielle Belz. *(pictured)* Te Komiti Māori co-chair Bonita Bigham says she is thrilled to celebrate the 'rangatira in mahi toi'. She said, "Despite some Māori artforms considered to be at crisis point, it's important to celebrate the stalwarts who are committed to revitalising these artforms. We're now seeing increased engagement in the Māori arts community and an increased awareness of placing importance on making sure that we hold on to these precious taonga. We acknowledge our partners Te Papa Tongarewa, Te Taura Whiri i

Te Reo and Te Matatini. Through their individual awards they have acknowledged Māori artists whose contribution to performing arts, Te Reo and mātauranga Māori is invaluable".

Gabrielle Belz (Ngāpuhi, Te Atiawa) is well known in South Taranaki as co-founder of Gallery Pātea and Māori artist collective Toi o Taranaki Ki Te Tonga. She also created mosaic paving stones with the community for the Manchester street playground in Pātea. She is an active member, exhibitor and mentor within many art groups and collectives in Whanganui and Aotearoa. Gabrielle's work is about identity, history, and possible futures. Birds are used often as an element in her work. She has exhibited in New Zealand, and overseas being represented in private and public collections here and off-shore. She considers herself fortunate to have been part of cultural exchanges in Samoa, Hawaii, Australia, Canada and the US.

For the full list of recipients, visit the website [News and blog | Creative New Zealand \(creativenz.govt.nz\)](#)

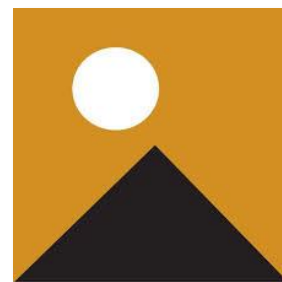
## Taranaki Arts Trail News

The 2022 Taranaki Arts Trail 2022 was a great success. The committee thanks everyone for taking part, visiting the studios and supporting artists. Heidi Griffin, Chair of TAT says "The selection and quality of work in Taranaki is outstanding".

### Taranaki Arts Trail AGM

**5.30 pm Tuesday 13th December 2022**

A small committee of predominantly volunteers organises the nationally recognised Arts Trail for Taranaki artists every year. New team members are welcome. The AGM will be an in-person and Zoom meeting. Taranaki Arts Trail celebrates 10 years in 2023 and plenty is planned to make it a year to remember. Artists' Registration opens in January on our website and closes in March. A must-do event for all Taranaki artists.



Email: [taranakiartstrail@gmail.com](mailto:taranakiartstrail@gmail.com) | Website: [www.taranakiartstrail.co.nz](http://www.taranakiartstrail.co.nz)

## Create Your World



## The Learning Connexion School of Creativity and Art (TLC)

An art school based in Lower Hutt (Wellington region) established 32 years, TLC is New Zealand's only education provider fully dedicated to teaching creativity processes. Programmes can be taken on-site or via distance learning. Many artists from Taranaki have trained through TLC. Students at TLC can gain NZQA qualifications in creativity. The New Zealand Certificate in Creativity (NZQA Level 4) is open entry and provides a pathway to the Diploma Level 5 and 6 qualifications. You can view the new Prospectus for 2023/24 [here](#).

**TLC Campus Tours:** A great way to discover what's on offer. Tours are open to individuals or small groups. If you would like to book a tour please call 0800 278 769 or contact via email.

TLC Newsletter - Stay in the loop of our art exhibitions, classes and events. Sign up [here](#).

Any questions or for further information, phone 0800 278 769 or Email [admissions@tlc.ac.nz](mailto:admissions@tlc.ac.nz)

# Aotea Utanganui – Museum of South Taranaki

## **Secret Lives of Stencils**

**Until 18 February 2022**

New Zealand branding and identity shown through the history of wool bale stencils. Many New Zealanders will be familiar with stencil letters, as they originate from a long history of use in British shipping. When colonies sent wool by ship to British auction sales, they were required to mark their wool bales with stencils. This continued for over 150 years. During that time stencils gained new uses, meaning and significance, remaining part of New Zealand culture today.

An exhibition in the museum foyer about Turuturu-mōkai features Reg Korau, the Iwi Liaison Officer at South Taranaki District Council, and a descendant of the Ngāti Tupaea people. The display tells the story of the Ngāti Rākei people who were the original residents of Turuturu-mōkai Pā when the site was known by a different name, lost over time. Reg talks about the history, and also the future plans for the site.

Earlier this year, a taonga tūturu was returned to Ngāti Tūpito and Ngāti Ringi, with Aotea Utanganui as the kaitiaki. *Whitikau*, a greenstone pendant, was gifted to James H Pope in 1908 on his retirement as the Chief Inspector of Native Schools. Along with the pendant are the original letter and envelope Tūtange Waionui penned to Pope, and two Koekoea feathers from the shining cuckoo and the long-tailed cuckoo. All of these taonga will be displayed in the permanent gallery from December 2022.



The Museum Education Room, *Poirokiroki* features Te Tiriti o Waitangi and the happenings before, during and after the South Taranaki Land Wars of the 1860s. See reproductions of the eight copies of Te Tiriti with the signatures of all the chiefs who signed it and information about the wars. This exhibition was created to coincide with the new school curriculum.

**Aotea Utanganui - Museum of South Taranaki, 127 Egmont Street, Pātea | Phone: 06 273 8354**

**Facebook: Aotea Utanganui | [www.museumofsouthtaranaki.wordpress.com](http://www.museumofsouthtaranaki.wordpress.com)**

**Email: [museum@stdc.govt.nz](mailto:museum@stdc.govt.nz) | Open: 10.00 am - 4.00 pm Monday – Saturday**

---

## **New Publication – Pātea Edition**



*Ngā Pūrehu Kapohau: a poetic homage to Pātea* is due for launch in March 2023. Editor-in-Chief Trevor Landers says “The response has been nothing short of astonishing. The calibre and range of poetry has really traversed the topography and soul of the district, using a myriad of approaches and addressing umpteen different themes in both Te Reo Māori and English” he said. The volume is co-edited by Dr Vaughan Rapatahana, Ngauru Rawiri and Landers. An invitation to the launch function will be announced in 2023.

---

## **Gallery Pātea – Summer Exhibitions**

### ***Nature on Canvas/ Abstracts by Jenni Corbett***

**Until 10 December 2022**

Featuring abstract art by local artist and tutor Jenni Corbett, and works on canvas created by her creative students in Pātea and Waverley, representing local flora and fauna.

Gallery Pātea celebrates its sixth anniversary in December and has continued to grow since its opening, with the support of Creative Communities, Toi Foundation, local artists and volunteers, we are thriving and proud to be supporting the arts and artists. Gallery Pātea welcomes new artists, Yvonne Buhler,

presenting watercolour and ink works and Geoffrey Bublitz’s turned woodworks from found and recycled timbers.

December and January will feature a range of artworks that celebrate Summer.

**Gallery Pātea, 56a Egmont Street, Pātea**

**Open: 10.30 am - 2.00 pm Wednesday - Saturday or by appointment**

**For more information text Gabrielle Belz 021 0813 8355 | Facebook: Gallery Pātea | Email [galleryPatea@gmail.com](mailto:galleryPatea@gmail.com)**

## Creative Inclusion – News & Exhibition

**Creative Inclusion: Exhibition - South Taranaki Creative Space (opposite Pak N Save)  
Friday 9 December, 10.00 am – 6.00 pm & Saturday 10 December, 10.00 am – 1.00 pm**

‘Creative Inclusion’ is a regular creative session for adults with disabilities and specific learning needs, held at the South Taranaki Creative Space in Hāwera. The workshops offer a range of art and creativity experiences. Tutor Sue Baker established Creative Inclusion in June 2021. After working with students with special learning needs at Hāwera High School’s Endeavour Centre, Sue realised that there were limited options for community involvement and continued learning outside of school. The programme gained funding support from the South Taranaki Creative Community Scheme and the response and success of the programme encouraged Sue to continue in 2022. Workshops are held each Thursday, with 14 students aged from 30-60 years. Creative Inclusion workshops have included collage, painting, 3D, printmaking, screen printing and a focus on crafts in the 4<sup>th</sup> term for Christmas gifts.



For more information: Email [suejb12009@hotmail.com](mailto:suejb12009@hotmail.com) or phone 027 594 6592

## Lysaght Watt Gallery – Summer Exhibitions

### ***The Weight of Words: Elliot Collins***

**Until 10 December 2022**

A solo exhibition, ‘part examination of place, memory, and language and part abstract enjoyment of colour and poetry.’ Presenting an interdisciplinary range of media including paintings, sculpture, photographs and video installation, the exhibition ‘seeks to remain relevant to communities across diverse regions, and is set amongst people and objects who sit in the difficult places of history and memory that may help us live better lives today by revealing their stories and sharing their wisdom’.

### ***Twelve Days to Christmas: Selected Taranaki & Whanganui Artists***

**12 - 24 December 2022**

A short group exhibition in the lead-up to the festive season featuring a diverse mix of artists from Taranaki and Whanganui regions. It includes previous and new exhibitors who present artwork in a variety of mediums including oils, acrylics, watercolours, ceramics, and sculpture and with something for everyone as 2022 draws to a close.



### ***Map Making & Path Finding - Dancing with Stars / Gabrielle Belz***

**9 January - 4 February 2023**

Presenting a collection of 30 prints coordinated by Melanie Yazzie PhD (Dine'-Navajo) with a long connection to printmakers from diverse nations and cultures around the globe, held in a private collection by Gabrielle Belz. A multi-media artist, Yazzie is an active printmaker herself and has been constructive in promoting the work of others throughout her career. Various printmaking processes are displayed throughout the anthology and reveal individual artistic responses to pathways chosen in life.

A solo exhibition featuring the work of Gabrielle Belz (*pictured left*) celebrates the unforgettable people who have touched and honoured her life and had an impact on her personal growth and development. Although the works are inspired by real people, they are not portraits of them, instead, the exhibition offers a more fluid interpretation so that ‘through imagery and symbolism I embrace them, while the dance is relived with aroha’.

### ***Feathered Chorus: Stratford Camera Club / Paintings: Wendy-May Thompson***

**7 February - 4 March 2023**

Stratford Camera Club presents a wide range of photographic styles and subject matter. Meetings are held on the 4<sup>th</sup> Tuesday of each month (March - December) and include viewing photographs submitted for feedback by an independent expert to enhance skills, hearing from various speakers and group outings. The exhibition promises to be varied and inspiring.

Painter Wendy-May Thompson moved from Napier to South Taranaki several years ago. This exhibition feature a series of acrylic paintings of native NZ birds and other introduced species inhabiting the North Island. Her inspiration was from a family member John Parker, who following a bereavement found solace and healing in photographing birds - she later collaborated with him to capture their essence.

**Lysaght Watt Gallery 4 - 6 Union Street, Hāwera**

**Website: [www.lysaghtwattgallery.co.nz](http://www.lysaghtwattgallery.co.nz) | Facebook: Lysaght Watt Gallery**

**Winter Hours: Monday - Friday 10.00 am - 3.00 pm Saturday 10.00 am - 12.30 pm | Phone 06 278 7611**

## Hāwera Repertory News

### **A Christmas Crack Up**

**23 November - 3 December 2022**

**Repertory House, 59 Collins Street, Hāwera**

Presenting an end of year production of an assortment of one-act plays.  
Tickets - \$30 from [iTicket](#) - includes dessert platter at interval.



### **AUDITIONS: Junior Musical 2023**

**2.00pm Sunday 4 December 2022, Repertory House**

Following the successful Junior Drama Festival, an opportunity for young performers, under 18.  
Performances are planned to be in the Easter school holidays 13 - 20 April 2023.

For more information contact Director, Jenny Perry – Phone: 021 1345 557, Email [stujenpenny@hotmail.com](mailto:stujenpenny@hotmail.com)

### **AUDITIONS: Shakespeare's Women**

**Introduction / information evening - 7.00pm Thursday 8 December, at Rep House**

**Auditions - 7.00pm Sunday 11 December and 7.00pm Monday 12 December, at Rep House**

For a different take on Shakespeare and a great opportunity to express the full extent of your theatrical creativity.

A "play" of excerpts featuring women from the plays of Shakespeare. From bawdy wenches, femme-fatales, tragic innocents, women falsely accused of adultery to stropky feminists - they include Juliet, Lady Macbeth, Portia, Cleopatra, Viola, Rosalind, Desdemona and others. Six performances in March and April 2023 at Hawera Repertory and of the Shakespeare Festival in Stratford. For more information contact Director, Clive Cullen – Phone: 027 551 9979, Email [cm.cullen@xtra.co.nz](mailto:cm.cullen@xtra.co.nz)

**Looking forward to 2023:** Aladdin – The Pantomime. Auditions in March 2023.

For more information contact [hawerarepertory@gmail.com](mailto:hawerarepertory@gmail.com) or visit [www.hawerarep.org](http://www.hawerarep.org)

---

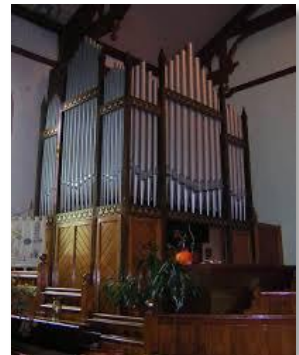
## Around the Mountain - Organ Recital Series

**Wesley Methodist Church, 45 Regent Street, Hāwera**

**11.15 am - 21 December 2022, 25 January & 22 February 2023**

Director of *Music to Taranaki Community & Cathedral*, Christopher J. Luke presents organ recitals at the Wesley Methodist Church in Hāwera. The 1916 Alfred Brake pipe organ is historic and unique to New Zealand, listed with the New Zealand Organ Preservation Trust with a Category 1 certificate. The recitals are supported by the Toi Foundation and South Taranaki Creative Communities. Gold coin donation entry, refreshments following the recital. All welcome.

For more information - Email [music@taranakicathedral.org.nz](mailto:music@taranakicathedral.org.nz)



## Quirky Fox – Art + Framing

### **Mini Mix & Match**

Showcasing 15 artists and 44 works each piece in the exhibition measures just 115-120mm diameter. A tiny showcase of the participating artists talents. A selection of pre-made custom frames are available to 'mix and match' with the works.

### **Beyond the Shadows: Leigh Schneider**

**Opens 18 January 2023**

Leigh Schneider's debut solo exhibition. This show seeks to ignite vision for transformation and growth—for a future beyond the shadows of current circumstance. It gathers together many of the artist's works on topics such as loss, isolation and depression, inviting the viewer to look deeper into the symbolism of the images, which point at a way forwards.

*Artwork by Leigh Schneider*

**Quirky Fox, 205a High Street, Hāwera | Phone: 06 278 6909**  
**Open: Monday - Friday 10.00 am - 4.30 pm Saturday 10.00 am - 12 noon**  
**Facebook: Quirky Fox: Art & Framing | Website: [www.quirkyfox.co.nz](http://www.quirkyfox.co.nz)**



## The Village Gallery – Summer Exhibitions

### **Wrap It Up: Members of the Village Gallery**

**Until 16 December 2022**

Christmas Exhibition by Members of The Village Gallery. Works by 25 artists, with over 80 artworks displayed. The exhibition is 'cash and carry', a great place to purchase locally made Christmas gifts. Includes paintings, wall hangings, pottery, photography, woodware, yarn and fibre items. *Left: Painting by Jean Finer*

**18 December to 23 January:** Gallery volunteers take a break over the holiday season.

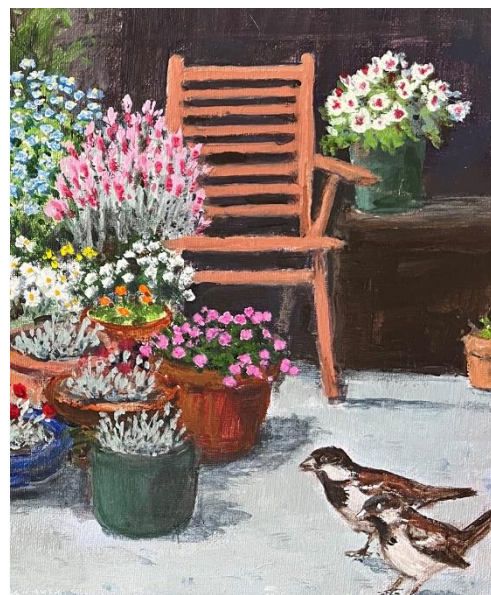
### **Creative Clearance**

**23 January - 3 March 2023**

Annual opportunity for Members to present their older artworks for sale. The Gallery reduces commission on sales, encouraging artists to lower their prices in this 'cash and carry' exhibition. The usual fundraising 'Sales Table' will not be run in conjunction with the exhibition, but planning is underway to hold a 'Market Stall' later in the year, when art and craft-related donations will be welcome.

Some exciting exhibitions and opportunities are coming up in 2023. An Open Exhibition is planned for July, all Taranaki artists are welcome to enter. Potential exhibitors are now being invited to apply to complete our programme of exhibitions for 2023 and beyond. New Friends of the Gallery Members and Volunteers are always welcome.

**The Gallery Shop** offers Members an opportunity to display their items throughout the year. Cards, prints, paintings, pottery, photographs, jewellery and handmade accessories are available for sale.



*The Village Gallery, 166 High Street, Eltham*

**Secretary, Donna Hitchcock – Phone 027 348 6826. Email: [postiehitchcock@gmail.com](mailto:postiehitchcock@gmail.com)**

**Winter hours: Tuesday – Friday 10.00 am – 3.00 pm. Saturday 10.00 am – 1.00 pm. Closed Sunday and Monday.**

**Facebook: [Village Gallery Eltham NZ](https://www.facebook.com/VillageGalleryElthamNZ) | Email: [villagegalleryeltham@gmail.com](mailto:villagegalleryeltham@gmail.com)**

## Percy Thomson Gallery – Summer Exhibitions

### **Taranaki in Miniature – Call for Entries**

**Entries Close: Friday 2 December 2022**

**Official Exhibition Dates: Friday 16 December 2022 – Sunday 29 January 2023**

The feature exhibition this summer. The Gallery invites all Taranaki Artists to present a small artwork, and collectively, this exhibition will make a big impact. This exhibition encourages established and emerging artists living around Taranaki Maunga, or have resided in Taranaki during secondary school or later years, to enter one artwork. It does not have to be Taranaki themed. Showcasing all mediums including painting, photography, fibre, ceramic, jewellery, stone, wood. The artwork must be equal to or smaller than 30 x 30 x 30cm (including framing).



### **Freed Up in Lockdown: Ewan McDougall**

**A Double Edge Sword: Dwayne Duthie**

**3 - 26 February 2023**

These paintings are a distillation of McDougall's intense period of creativity, when the oil paint flew liberally onto the canvas every day in his Dunedin-based Art Studio. True to McDougall's style, the paintings are vibrant and witty. *(pictured left – McDougall painting 'Love in the time of Covid')* Duthie's latest series of artworks demonstrates his maturity and refinement as one of Taranaki's most compelling young artists.

**Percy's Place** is the gallery's boutique art shop, open 10.30 am – 3.30 pm on Weekdays, and 10.30 am – 2.30 pm on Weekends. The Gallery is currently seeking volunteers to assist with running the shop. The store is full of creations by local artists. If you are interested in spending a day or two each month in the store, please contact the Gallery.

Time to renew Friends of the Gallery Memberships for 2022/23. Please enquire in person at the Gallery or renew online.

**Percy Thomson Gallery, Miranda Street, Stratford | Director: Laura Campbell | Phone 06 765 0917**

**Open: Monday - Friday 10.30 am - 4.00 pm. Saturday - Sunday 10.30 am - 3.00 pm**

**Website: [www.percythomsongallery.org.nz](http://www.percythomsongallery.org.nz) | Facebook: Percy Thomson Gallery**



## from out of the blue studio gallery

### **Side By Side: Jennifer Patterson & Jeanette Gillies**

**Until 19 December 2022**

A sophisticated collection of fibre works, reflecting years of training and practice. Free style machine quilting by Jeanette is the final touch to her intricately dyed and printed fabrics, where she accumulates shades and tints, hues and textures that can only be described as painterly in their subtlety. The stitching that enhances this colour work fills the pieces with glorious detail, three dimensional definitions and visual clarity. The final works are wall ready art pieces that speak of the wildlife, the scenery and the outdoor life style of Aotearoa. They are iconic expressions of being a 'kiwi'. Jennifer has a fascination with turning the unwanted and discarded into tools for creating beauty with her use of abandoned metal objects to create rust prints that are then embellished and refined. The tension between the print source and the delicacy of the fabrics used is wonderfully balanced and often carried in multiple layers of cloth on each piece of work. Botanical dyeing is used to embellish beautifully crafted journals and wearable objects.

### **The Beach - Paper, Books and Baskets**

**22 December 2022 - 30 January 2023**

Featuring eight contributing artists who have collaborated on a project and also made their own stand alone items - Wendy Watson and Julz Coffey from Whanganui, Francis Salole from Paekakariki, Toni Hartill from Auckland, Jeanette Verster from New Plymouth, Ildiko Vigh from The Hague, Viv Davy from Opunake, Tanya Green from the Mangaroa Valley and Lynn Taylor from Dunedin.

### **A Thing of Shreds and Patches: Jane Woodhall**

**2 February – 13 March 2023**

Jane is a creative assembler and stitcher. Her works are powerfully evocative and intricately worked. Check out Jane's website for further exploration of her textile art practice - [www.woodhall.co.nz](http://www.woodhall.co.nz)

**Contact: Viv Davy. Phone: 021 407 424 | 18 Halse Place, Ōpunakē**

**Website: [www.fromoutofthebluestudiogallery.com](http://www.fromoutofthebluestudiogallery.com) | Open: 1.00 pm – 5.00 pm Thursday – Monday or by appointment**

**Facebook: [from out of the blue studio gallery](https://www.facebook.com/fromoutofthebluestudiogallery) | Instagram: [threadthinker](https://www.instagram.com/threadthinker) | Email: [silktangles@me.com](mailto:silktangles@me.com)**

---

## Forbes & Flay Studio

### **Botanical Drawing Art Club**

**Sundays - 11 December 2022, 8 January & 5 February 2023, 10.00 am - 2.00 pm**

Join Tabatha Forbes for a Sunday art class for those wanting to spend a few hours working on their plant drawing or continue on works started from previous classes. \$70 per class - Includes all materials. Discounts are offered to returning students. Numbers limited, booking essential.

**Plantgirl & Co Pop-up Shop - Open most weekends, 10.00 am - 2.00 pm**

**Private Art Tuition Available - Forbes & Flay Studio**

Develop your creative confidence in private classes with Dr Tabatha Forbes DocFA, MFA (Hons). Tabatha has worked with NCEA art students and those needing to focus their artistic skills or develop new ones. All levels welcome, ages 16 plus pref. For more information and free consultation please email Tabatha directly.



---

**Forbes & Flay Studio, 40 Tasman St, Ōpunakē | Email: [botanicalartclass@gmail.com](mailto:botanicalartclass@gmail.com) | Facebook: Forbes and Flay**



## Everybody's Theatre - Ōpunakē

Historic theatre restored to its former glory. In addition to all the latest new releases, the theatre also hosts boutique nights, playing a selection of classic, foreign and fringe films. Check the website for screening and special events. Bookings can now be made online. Enquiries for special events are welcome.

**Boutique Nights – 7.00 pm, first Sunday of the month**

Sunday 4 December 2022: *She Said*

**Everybody's Theatre, 72 Tasman Street, Ōpunakē | Phone: 027 383 7926**

**Website: [www.everybodystheatre.co.nz](http://www.everybodystheatre.co.nz) | Email [everybodystheatre@gmail.com](mailto:everybodystheatre@gmail.com)**

## Fenton Street Art Collective - Exhibitions

**Jo Stallard / Carina McQueen**

**From 9 December 2022**

Stallard's paintings capture the serenity and stillness of "found" moments through the medium of oil.

McQueen has painted since the age of 10. She says "The thoughts and ideas that come to my mind have a chance to become reality. It may be a simple inspiration or observation that I want to explore more, it may manifest as I hoped, or it may not. I paint for myself, this is me".

**Stories by my Grandmother: Constanza Biceno**

**From 20 January 2023**

"This collection of works has been inspired by the unbelievable and magical - but real - stories that Uberlinda, my grandmother, used to tell us thousands of times after school."

**Unconscious Intention: Jacqui Wilkinson**

**From 23 February 2023**

Exploring the notion that our journey through life is mostly out of our hands. It's not linear or logical; rather, more a series of roadblocks, dead-ends, unfamiliar corridors, and openings that seemingly have no end, until they suddenly finish. *Pictured right*



**11 Fenton Street, Stratford | Facebook: Fenton Street Art Collective | Email: [fentonartscollective@gmail.com](mailto:fentonartscollective@gmail.com)  
Open: 9.00am – 2.00pm Monday – Saturday, 10.00am – 2.00pm Sunday | Phone: 021 0299 2839**

---

## Puke Ariki - Summer Exhibitions

**Nekenekehia Tukua: A WharehokaSmith Exhibition**

**Until 12 March 2022**



**Ngū Tipua: Ngā Wāhanga Weriweri: Colossal Squid: Freaky Features**

**3 December 2022 - 19 March 2023**

The colossal squid, *Mesonychoteuthis hamiltoni*, is the largest squid on the planet and is a ferocious predator. So rare is this squid, that only eight adult specimens have ever been scientifically reported. While the iconic colossal squid itself can be visited at Te Papa Tongarewa, some of its key features are now on display at Puke Ariki as part of a Te Papa touring exhibition. These include a lens from the squid's enormous eyes, which help it to navigate the dark depths of the ocean, and a tentacle armed with barbed hooks for catching prey. You can touch a model tentacle hook and a model squid beak, to better understand these amazing adaptations. The life cycle of the mysterious colossal squid is shown in a popular animated video and you can see a documentary showing the actual specimen being examined by scientists at Te Papa.

**Puke Ariki, 1 Ariki Street, New Plymouth | Phone: 06 759 6060 | Open: 10.00 am - 5.00 pm 7 days | Free Entry  
Website: [www.pukeariki.com](http://www.pukeariki.com) | Facebook: Puke Ariki: Museum-Library-Visitor Information**

---

## Gover Street Gallery – Exhibitions

**1 - 23 December 2022**

**David Rogers** - Inspired by Aboriginal art and patchwork quilts.

**Brett Williams** - Colourful landscapes and abstracts in his first exhibition.

**Have a Go!** Same size, any subject or medium. Open to all to have a go.

Gallery will be closing for holiday break at 2.00pm 23 December 2022.

**Opening on 4 January 2023**

**Summer** - Open to all artists to exhibit.

**February**

Gover St Gallery celebrates 3 years. Thanks for all your support.

**Large and Luscious** - Open to all artists to exhibit. Maximum size 1 metre.



**19 Gover Street, New Plymouth | To exhibit, register, enquire, contact Heidi on 06 757 4278  
Open: Wednesday – Monday 10.00 am – 4.00 pm, Sunday 12 noon – 4.00 pm. Closed Tuesday  
Facebook/Instagram: Gover Street Gallery | Email: [goverstgallery@gmail.com](mailto:goverstgallery@gmail.com)**

## Coastal Arts Trail

Experience the newly launched Coastal Arts Trail, stretching from Taranaki through to Whanganui and Manawatū. This self-drive journey extends over 250 kilometres, allowing travellers to take in an eclectic mix of arts and creative experiences along the way at their own pace. The trail is the longest of its kind in the southern hemisphere and is a must-do this spring. If you're looking to experience the trail in style and really immerse yourself in all things creative, [why not book out Vallery?](#) Vallery is a world-first art gallery campervan that offers a completely immersive art experience, designed specifically for the Coastal Arts Trail in partnership with Quirky Campers NZ. You can sleep under art, dine with art, and recline on art, all integrated in a comfortable and practical way.



For more information or to plan your trip, visit: [coastalartstrail.nz](http://coastalartstrail.nz)

## Creative New Zealand – Funding Support

Creative New Zealand is the national arts development agency developing, investing in and advocating for the arts. Check out the [Funding calendar](#) for an overview of the support available. [Sign up](#) to receive news and updates via email. [Arts Grants](#) offer short-term project funding for New Zealand artists, arts practitioners and arts organisations (including groups and collectives). This funding enables more sustainable careers, encourages innovation and the development of art practice, and provides opportunities for diverse communities to access the arts.



For updates and information on all Creative NZ funding, visit the [website](#)



## The Big Idea

The Big Idea is an online hub for artists of all genres. The Big Idea provides you with daily news updates, the latest jobs and opportunities and events as well as ideas and inspiration from across the creative industries to help you create your own success. The Big Idea is the largest, leading online resource for the arts in New Zealand.

Website: [www.thebigidea.nz](http://www.thebigidea.nz)

## Would you or your group like to have information included in the next edition of Te Tohu a Toi – STATE OF THE ARTS?

Please send concise text and photographs for the Autumn Edition (March, April, May 2023) to: [Michaela Stoneman, Arts Co-ordinator: michaela.stoneman@stdc.govt.nz](mailto:michaela.stoneman@stdc.govt.nz)

Send information by:

Monday 20 February 2023

Publish date:

Wednesday 1 March 2023

To unsubscribe to *State of the Arts*, please [email Unsubscribe](#) in the subject line.