

# Te Tohu a Toi

# STATE OF THE ARTS

South Taranaki Arts Bulletin # 56

Spring 2024

| [Art News](#) | [Opportunities](#) | [Exhibitions](#) | [Art Events](#) |

Welcome to our Spring edition of *State of the Arts*.

After the dark winter months, things start to get moving quickly in our region, as soon as there is a hint of spring. The season of garden festivals, art trails, art awards and events is just around the corner, offering a wide selection of activities to engage in and be inspired by. Within my radar, there are also many mural projects brewing in a few of our South Taranaki towns, all involving local youth, artists and groups working together to bring colour and vitality to our towns and public spaces.

South Taranaki based artist Charlotte Stark (Ngāpuhi, Te Rarawa) recently won the Toi Māori section at the Emergence Art Awards held at Percy Thomson Gallery in Stratford, for her artwork 'Te Pakanga'. The exhibition, featuring works by Taranaki artists aged 13 – 26 years is a bi-annual event, proudly supported by the Taranaki Foundation through the Taranaki Hauora Fund. The Fund focuses on the hauora (well-being) of rangatahi (young people) and the nurturing of their creativity. Congratulations Charlotte!



South Taranaki artist Charlotte Stark with her winning artwork 'Te Pakanga'

The Lysaght Watt Trust Ronald Hugh Morrieson Awards celebrates 37 years of the event this year. Offering a platform for the literary arts in Taranaki, it provided free writing workshops in June by nationally renowned writers to high school students and adults, and publishes the winning entries each year. The Taranaki National Art Awards committee are working hard to deliver their popular event again this year, attracting over 300 entries from artists from all over Aotearoa. A great opportunity to visit the iconic exhibition in Ōpunakē and purchase original artwork to support talented artists.

South Taranaki's new library, arts and culture centre, Te Ramanui o Ruapūtahanga is opening in late November in Hāwera. This brand-new facility will be a community hub, creating vibrancy and connectivity in the CBD, for both locals and visitors to the district. The inaugural exhibition in the new, relocated Lysaght Watt Gallery will present *Tuatah'i / First*, an exhibition featuring selected work by South Taranaki artists, celebrating our flourishing arts community. Exciting times 😊

Please continue to support our galleries, groups, projects and events. Thanks for your positivity, commitment and vision to keep the arts alive and thriving!

Ngā mihi,

*Michaela*

Michaela Stoneman | Arts Co-ordinator | South Taranaki District Council |  
0800 111 323 [michaela.stoneman@stdc.govt.nz](mailto:michaela.stoneman@stdc.govt.nz) | [www.southtaranaki.com](http://www.southtaranaki.com)

## South Taranaki Creative Communities Funding

The South Taranaki Creative Communities Scheme provides funding assistance for community-based arts activities in South Taranaki that meet one or more of the following funding criteria:

- **Broad community involvement** - A project that will create opportunities for local communities to engage with and participate in arts activities.
- **Diversity** - A project that will support the diverse arts and cultural traditions of local communities, enriching and promoting their uniqueness and cultural diversity.
- **Young people** - A project that will enable and encourage young people (under 18 years) to engage with and actively participate in the arts.

**The last South Taranaki District Creative Communities application round closed on 30 August 2024.**

The next round will be in the first half of 2025. If you have an idea for a project or need some help with your application, you can email STDC Arts Coordinator Michaela Stoneman for support.

For detailed information and forms, please visit the link [here](#)

Any enquiries to discuss an application, email [funding@stdc.govt.nz](mailto:funding@stdc.govt.nz) or phone 0800 111 323 or 06 278 0555



### Arts in the Park

**10.00 am – 3.00 pm Saturday 7 December 2024**

**King Edward Park, High Street, Hāwera**

Registrations are now open for artists and groups to take part in Taranaki's premier outdoor arts and crafts festival. Enjoy the large, pleasant, open environment of King Edward Park to exhibit, demonstrate and sell your arts or crafts - stalls are FREE! A walk through the Park is a voyage of discovery, including local musicians, food stalls, hands-on art activities for kids in the *Art Tipi* and much more. *Arts in the Park* is an entertaining day for the whole whānau, offering an opportunity to support local artists and craftspeople by purchasing handmade goods to kick-start your Christmas shopping. Check STDC's Facebook page for updates.

Registration forms available in late September 2024: [www.southtaranaki.com/artsinthepark](http://www.southtaranaki.com/artsinthepark)

For more information contact South Taranaki District Events on 0800 111 323 or email [events@stdc.govt.nz](mailto:events@stdc.govt.nz)

## Arts Lease Programme 2024/25 – On Hold

The Art Lease Programme was established in 1996 to support and nurture our creative community. Visual art submissions from South Taranaki artists are selected for lease and display in the Council's Administration Building in Hāwera. This programme will go on hold and will not be running for the next year, as the building is scheduled for earthquake strengthening.

South Taranaki District Council staff and services are to be relocated for up to six months while its Hāwera headquarters is earthquake strengthened. Chief executive Fiona Aitken said the building currently met the minimum earthquake standard, which is 34% of the New Building Standard (NBS) but, because it was the district's Civil Defence emergency operations centre, it was required to meet higher structural requirements and be 80% of the NBS. "We need to make sure that in the event of a major disaster we are able to use this building as our base of operations as well as continue to deliver our business-as-usual activities to our communities," Aitken said. "We have gone out to tender and anticipate that physical work will start early in the new year. This means we'll have to relocate staff from the main administration building for approximately four to six months."



2023/24 Arts Lease artwork by Karen Mekalick

The STDC Arts Co-ordinator will connect with all current artist's in the programme to arrange the return of artworks at the end of the lease period in November 2024. The programme will commence again in November 2025.

[Coastal Art Trail](#) - [click to follow link](#)



## Lysaght-Watt Trust Ronald Hugh Morrieson Literary Awards 2024

**Awards Evening: 7.00 pm Wednesday 23 October 2024**  
**TSB Hub, Camberwell Road, Te Hāwera**

Entries have closed for this year's Lysaght-Watt Trust Ronald Hugh Morrieson Literary Awards. With over 180 entries, judges will be busy over the next month compiling the shortlist, announced on Thursday 3 October. All welcome at the Awards evening, where judges and sponsors will present awards and read winning entries. A Kapa Haka performance by a local school will open the awards this year. Please RSVP to awards night by email: [entries@stdc.govt.nz](mailto:entries@stdc.govt.nz)



**Website: [Lysaght-Watt Trust Ronald Hugh Morrieson Literary Awards - South Taranaki District Council](#)**

## Te Wiki o Te Reo Māori 2024 – South Taranaki LibraryPlus

### **Te Wiki o te Reo Māori: Art for Adults**

Join Community Outreach Library Cadet, Charlotte Stark in a fun and interactive session for adults to get creative. Create a bookmark using a print technique and learn about Kowhaiwhai designs. Free for everyone.

**Monday 16 September – Pātea LibraryPlus 10am | Waverley LibraryPlus 1.30pm**

**Tuesday 17 September – Hāwera LibraryPlus 10am | Manaia LibraryPlus 1.30pm**

**Wednesday 18 September – Eltham LibraryPlus 10am | Ōpunakē LibraryPlus 2.45pm**

**Thursday 19 September – Kaponga LibraryPlus 2.45pm**



### **Moira Wairama visits South Taranaki Libraries**

Storytelling extraordinaire Moira Wairama will be visiting South Taranaki Libraries to capture the minds of tamariki and help us celebrate Te Wiki o te Reo Māori within our communities. Free for everyone.

**Thursday 19 September:** Eltham LibraryPlus 9.30am -10.30am | Ōpunakē LibraryPlus 11.30am - 12.30pm

**Friday 20 September:** Pātea LibraryPlus 9.30am 10.30am | Waverley LibraryPlus 11.15am - 12.15pm

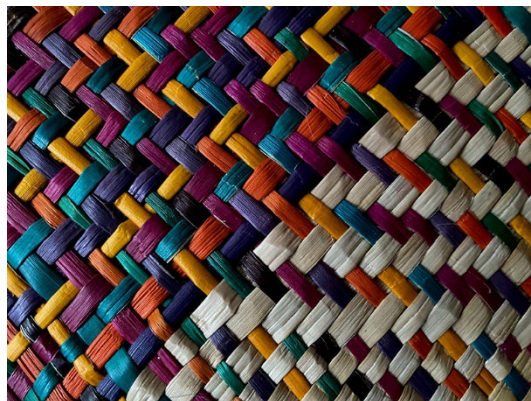
**Saturday 21 September:** Hāwera LibraryPlus 10.30am - 11.30am

## Whiria Taranaki 2024

**26 - 28 October 2024**

**TSB Hub, Camberwell Road, Te Hāwera**

Toi o Taranaki Ki Te Tonga invites all kairaranga to our Whiria Taranaki Weaving Symposium this Labour Weekend. Whiria Taranaki is a gathering of Taranaki weavers of raranga Māori (who whakapapa to Taranaki or who live in our rohe) to share mātauranga and whanaungatanga, to promote creativity and provide opportunities for the wider Taranaki community to engage with the kairaranga and their mahi. Māori artforms of particular focus include tukutuku, tāniko, kupenga, kete, kākahu, piupiu, whāriki – any creativity that utilises methods of raranga Māori. Accommodation is available at a local marae. Nau mai, haere mai!



**For more information and to register, contact: [whiriataranaki23@gmail.com](mailto:whiriataranaki23@gmail.com)**

## Taranaki Arts Trail 2024

**Taranaki Arts Trail: 1 -10 November 2024**

**9.30 am - 4.30 pm daily. Free admission**

**Taranaki Arts Trail Exhibition: Trail Mix 2024**

**Lysaght Watt Gallery, Hāwera: 14 October - 10 November**



The Taranaki Arts Trail celebrates its 11<sup>th</sup> trail this year, with over 80 participating artists opening their studios throughout the region and a suite of exhibitions and events to entertain visitors. Look out for the brochure for full details about the artists, events, workshops and tours. South Taranaki studios to visit this year are:

**Claire Jensen:** 29 Hickey Place, Ōpunakē

**Krismarlianti Donaldson:** 30 Ngatai Street, Manaia

**Jonny de Painter:** 38A Leicester Street, Pātea

**Website: [www.taranakiartstrail.co.nz](http://www.taranakiartstrail.co.nz)**

### Toi on Tour – Creative Taranaki Hui Series 2024

Established in 2021, Creative Taranaki is an independent charitable trust funded by New Plymouth District Council. Governed by a board of trustees and employing an Arts Co-ordinator, it advocates for the creative community, offers practical assistance through capability-building workshops, and is a connection point and conduit for the whole arts ecosystem in the region.

Creative Taranaki Arts Co-ordinator Megan Symes started the role in mid-January, meeting with local creatives and providing information, resources and opportunities. “There is a wealth of talent in our province that spans every type of creative practice, and it has been an awesome learning curve to discover the diversity and passion in the sector”, she says. Creative Taranaki will travel around the Mouna in September to present its strategic plan and seek input into its work programme.

Creative Taranaki Chair Catherine Anderson Rhodes says “We have some exciting initiatives planned that will make a meaningful and tangible difference to our region’s creatives, and we look forward to sharing these and seeking assistance with them. The gatherings will be informative, fun and hands-on.”

The hui series runs over consecutive Tuesdays, with both daytime and evening sessions available. Free to attend and everyone welcome, RSVP’s are appreciated for catering purposes – Email: [megan@creativetaranaki.org](mailto:megan@creativetaranaki.org)



#### South Taranaki - Tuesday 10 September 2024

Pātea: Hunter Shaw Building, 29 Victoria Street, 12.30pm - 2.30pm

Hāwera: Community Centre Hall Lounge, 66 Albion Street, 5pm – 7pm

#### Central & Coastal Taranaki - Tuesday 17 September 2024

Stratford: TSB Chambers, War Memorial Centre, 55 Miranda Street, 12.30pm - 2.30pm

Ōpunakē: Everybody’s Theatre, 72 Tasman Street, 5.30pm - 7.30pm

#### North Taranaki - Tuesday 24 September 2024

Urenui: Urenui Community Centre, 13 Takiroa Street, 12.30pm - 2.30pm

New Plymouth: Little Theatre, 29 Aubrey Street, 5.30pm - 7.30pm

For more information and updates - [Facebook: Creative Taranaki](#) | [Website: www.creativetaranaki.org](http://www.creativetaranaki.org)  
[Email: trust@creativetaranaki.org](mailto:trust@creativetaranaki.org) | [megan@creativetaranaki.org](mailto:megan@creativetaranaki.org)



2024 Photography Award winner,  
*Lara Gilks*

## Taranaki National Art Awards 2024

**Sinclairs Event Centre, Tasman Street, Ōpunakē**

**Entries Close: Friday 6 September 2024**

**Awards Ceremony: 6.00 pm Friday 1 November 2024**

**Exhibition: 10.00 am - 4.00 pm, 2 - 10 November 2024**

The TNAA aims to provide an exceptional visual art experience that encourages participation within a diverse range of creative mediums. Co-judges for 2024 are Taarati Taiaroa (Te Ātiawa, Ngāti Tūwharetoa, Ngāti Apa), Assistant Curator Contemporary Māori Art at the Govett-Brewster Art Gallery Len Lye Centre, and Aaron Lister, Senior Curator (Toi) at City Gallery Wellington Te Whare Toi.

Entries are open for this national visual arts competition – the 22<sup>nd</sup> year of this iconic annual event, held in Ōpunakē. Cash prizes are offered in seven categories: Painting, Taranaki Artists, 3D, Works on Paper, Fibre Art, Tō Taranakitanga and Photography. Entry is \$25 per artwork; artists can only enter each category once but can enter up to three categories. This long-standing event would not be possible without the generous support of sponsors and the Ōpunakē community. All entries are displayed in the exhibition and most works are for sale, offering a unique opportunity to purchase original artworks. The exhibition coincides with the region's garden festivals and the Taranaki Arts Trail. Artists can enter online. Check for updates and news on Facebook. Feel free to come along and contribute if you're keen to be involved. Contact Chair, Megan (027 500 7722) or Candace and Natasha, Sinclairs Events Centre (027 249 1620) for more information or to get involved.

**Facebook: Taranaki National Art Awards** | **Email: [contact@taranakiartawards](mailto:contact@taranakiartawards.co.nz)**  
**Please visit the website to find out more and enter: [www.taranakiartawards.co.nz](http://www.taranakiartawards.co.nz)**



## Taranaki Singer Songwriters Events 2024

**Friday 6 September: Singer Songwriters at Percy Thomson Gallery, Stratford**

**Friday 4 October: Singer Songwriters at the Lakeside Playhouse, Ōpunakē**



Prepare for the second round of the Taranaki Singer Songwriter events this winter, bringing even more music and creativity your way! Building on the success of our initial series, we're thrilled to announce new dates and venues. These events are free to attend, providing a wonderful platform for musicians to showcase their talents and for audiences to enjoy the rich local artistry. Musicians interested in performing can sign up on our website, where you'll also find more information about the events. Don't miss these exciting gatherings of music and community!

For more information visit: [www.taranakisingersongwriters.com](http://www.taranakisingersongwriters.com)  
Facebook: [Singer Songwriters New Plymouth](#)

---

## The Handsome Giants

**7.30pm - 9.30pm, Friday 6 September 2024**  
**Repertory House, 59 Collins Street, Hāwera**

A match made in heaven, Shayn Wills, one of the country's finest exponents of the blues, teamed up with Freddy Limbert on drums, a force of nature. This pair has been stopping people in their tracks for decades with their high-energy, authentic brand of blues. Joined by Zephyr Wills the next generation, born with the groove in his bones. Expect a dynamic show across genres of Blues, R&B and Rock'n'roll, with some Folk influences from Zephyr. Shayn 'Hurricane' Wills (guitar, harmonica, vocals) Freddy Limbert (drums), Zephyr Wills (guitar, harmonica, vocals). Tickets can be purchased at [Eventfinder](#) or \$20 on the door.



Contact Celine Filbee at Jack It Up Event Management: Email [jackitup@inspire.net.nz](mailto:jackitup@inspire.net.nz) or phone 027 454 0591

---

## Dancing Queen – A Tribute to ABBA



**7.00pm Sunday 24 November 2024**  
**Hāwera Memorial Theatre, Albion Street, Hāwera**

Presented by Showtime NZ, the ABBA show everyone adores - a night of fun, frivolity and pop hits galore! Direct from Australia, this show returns by popular demand. Far from being 'just another cover band', *Dancing Queen* is a full-scale concert production featuring more than two hours of energetic musical performances with a live backing band, replica costumes, theatrical lighting and FX. Featuring internationally acclaimed impersonators *ABBA*solutely *fABBA*ulous, *Dancing Queen* gives

fans of all ages a chance to re-live the ABBA concert experience, celebrate the music of ABBA and dance the night away!

Bookings: [Dancing Queen - Hawera tickets](#) | [Hawera Memorial Theatre](#) | [Ticketek New Zealand](#)

---

## Paepae in the Park 2025

**Meeting: 5.30 pm 16 September, Café Aotea, 56 Egmont Street, Pātea**

Paepae in the Park is a free music festival held at Memorial Park in Pātea. The annual festival celebrates the signing of the Treaty of Waitangi, held on Waitangi Day, 6 February. If you are interested in getting involved with the upcoming Paepae 25 event, feel free to get in touch – all are welcome at monthly hui. The committee are looking for enthusiastic individuals who are passionate about making a positive impact in our community - support and participation is highly valued. 2025 Stall Application forms and Expressions of Interest forms for performers are available at Pātea LibraryPlus.



Facebook: [Paepae in the Park 2025 - music festival](#) | Email: [paepaeinthepark@gmail.com](mailto:paepaeinthepark@gmail.com)



## Performers Unlimited – Variety Show

**9 & 10 November 2024**

**Hāwera Memorial Theatre, Albion Street, Hāwera**

Russ Standing has been involved in the performing arts in South Taranaki for over 50 years, an incredible achievement of dedication and devotion to his chosen craft. Russ will direct a fundraising Variety Show, *Performers Unlimited* this spring. Performers of skills and genres were invited, including singers, musicians, magicians, comedians, puppeteers, circus acts, dancers and bands. Welcoming new and experienced performers of all ages and experience, the show will feature new talent, alongside stage stalwarts the community knows and loves from local productions. A diverse cast of 18 performers and varied performing groups will present two performances by a cast of over 70 people, including school children. All proceeds to support the Theatre Trust to continue to provide an exceptional theatre facility in South Taranaki. Save the date, ticket information will be available soon.

**For more information contact: Russ Standing - [russellss@xtra.co.nz](mailto:russellss@xtra.co.nz) - or phone Russ on 027 242 3904**

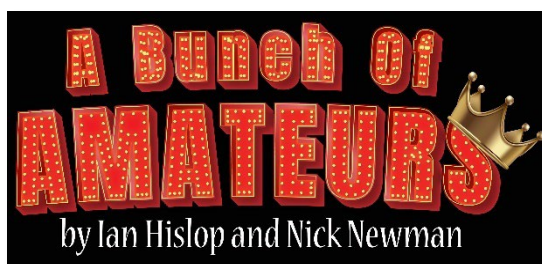
## Hāwera Repertory News

**Auditions: 7 & 8 September 2024, 10.00am - 1.00pm each day**

**Performances: 21 - 30 November 2024**

End of year production, "A Bunch of Amateurs" by Ian Hislop and Nick Newman, to be performed at Repertory House, directed by Peter Meikle. Keen to boost his flagging career, fading Hollywood action hero Jefferson Steele arrives in England to play King Lear in Stratford – only to find that this is not the birthplace of the Bard, but a sleepy Suffolk village. Instead of Kenneth Branagh and Dame Judi Dench, the cast are a bunch of amateurs trying to save their theatre from developers. Jefferson's monstrous ego, vanity and insecurity are tested to the limit by the enthusiastic am-dram thespians. As acting worlds collide and Jefferson's career implodes, he discovers some truths about himself – along with his inner Lear!

Cast stage ages 19-55+. An information evening was held on 1 September, with Director Peter Meikle. Auditions will be held on 7 & 8 September, with recalls at 12 noon, Sunday 8 September.



**For more information, contact: [info@hawerarep.org](mailto:info@hawerarep.org) Facebook: Hāwera Repertory Society**

## South Taranaki Creative Space



South Taranaki Creative Space is a community-focused creative hub in the Hāwera CBD, providing a welcoming space to meet, interact, learn new skills and network with other creative people. Local artist Justin Mills will be exhibiting on the Community Unity Gallery for the month of September. A mix of old and new work at affordable prices. Works will be featured on our Facebook page during September. All welcome - please get in touch to exhibit, join a class or book a workshop. *Pictured left: Mixed media artwork by Justin Mills*

### **Creative After-School Kids Art Classes: Weekly, Monday – Thursday.**

Classes cover a wide range of mediums to help young creatives with their artistic development by exploring different ideas and techniques. Designed for students who have a genuine interest in learning art and creativity and attend regularly.

<b>Mondays:</b>	12 - 15 years	3.30 pm - 5.00 pm
<b>Tuesdays:</b>	10 - 12 years	3.30 pm - 5.00 pm
<b>Wednesdays:</b>	8 - 10 years	3.30 pm - 5.00 pm
<b>Thursdays:</b>	5 - 7 years	3.45 pm - 5.00 pm

**Creative Adults Art - Beginners:** Thursdays 6.30 pm - 8.30 pm

**Creative Adults Art - Experienced:** Tuesdays 6.30 pm - 8.30 pm

**Creative Holiday Programmes:** For children and families during school holidays.

**Facilitators: Carl Fairweather and Erryn Willcox | 41 Princes Street, Hāwera | Phone or text: 027 361 6930  
Facebook: South Taranaki Creative Space | Email: [southtaranakicreativespace@gmail.com](mailto:southtaranakicreativespace@gmail.com)**





## The Art of Stained Glass – St Mary’s Church Tour

**4.00 pm Saturday 19 October 2024 (Church open from 3.30 pm for a cuppa)**

Hāwera's St Mary's Church will be open to view the highly decorative stained glass windows, including a short talk by Karen Christian. The event is hosted by the Taranaki Heritage Churches Task Group and St Mary's Vestry. St Mary's stunning collection of stained glass windows were made in England in the traditional manner by 'Whitefriars'. Each piece of glass is hand-painted and fired, works of art in themselves. The statement window, known as the 'Peace Window' is a New Zealand work made following WW1. The expertise in the windows is much admired, a fine example of the craft. With the reopening of the Church after earthquake strengthening, Vestry decided to encourage members of the public to visit. The building and windows inspire artists and craftspeople - postcards and magnets will be for sale. In addition, there is an opportunity to visit Paul Burgham's *Glass, Stone & Wood Studio* at 10 Julian St, Eltham at 2:15 pm, prior to the church tour. Free entry, koha is welcome towards the wellbeing of local heritage churches.

**For more information, contact Karen Christian – Email: [j.k.christian@xtra.co.nz](mailto:j.k.christian@xtra.co.nz)**

---

## Tairoa Lodge – Artists in Residence

**1 – 10 November 2024**

Tairoa Lodge will feature three South Taranaki artists during the Centuria Taranaki Garden Festival this year. Celeste Cole, Caryl Murray and Bianca Mitchell will show work in the Tairoa Church Hall, and will be there to engage with visitors during the two weekends of the festival, surrounded by sweeping lawns, towering kauri and pohutukawa. House and Garden Tours and group lunches are available – book direct with Tairoa Lodge. *Pictured right: Cyanotype by Caryl Murray*



**Website: [www.gardenfestnz.co.nz](http://www.gardenfestnz.co.nz)**



## Paint & Sip Workshops - Jenni Corbett

Jenni Corbett is a local artist who enjoys encouraging others to explore their creativity. She is running *Paint & Sip* and *Paint & Coffee* mornings in Waverley this spring. All sessions held at 50 Smith Street, Waverley.

### **Acrylics on Canvas: Guided Painting Demonstration**

All materials supplied. \$20 per person per session. Please register.  
Saturday Sessions, 10.00am: 21 September & 19/23 November 2024  
Wednesday Sessions, 5.30 pm: 18 September, 23 October & 20 November.

### **Pastel Workshop: Friday 11 October, 10.00 am**

Drawing sunflowers using pastels. All materials supplied. \$30 per person. Please email to register. If you have a birthday or special occasion to celebrate with a creative art session, feel free to get in touch.

**Facebook: [Jenni Corbett Art](https://www.facebook.com/jennicorbettart) | Email: [jennicorbettart@gmail.com](mailto:jennicorbettart@gmail.com)**

---

## Virtual TART

### **SEPTEMBER: A Year in the Life: Dale Copeland**

Artworks produced by Virtual TART webmistress Dale Copeland, in her 80th year. *Pictured right: 'Remember Always' by Dale Copeland*

### **OCTOBER: Reality Show**

This show will present artists responding to the suggestion *Reality Show*. Not like the TV pseudo-dramas, these will be artists' interpretations of their own reality. Whether it's their place in the world, their studios, or their current joys or problems.



**For more information and to view exhibitions, visit [www.tart.co.nz](http://www.tart.co.nz)**



## Aotea Utanganui Museum of South Taranaki

### **Into the Archives**

The early 20th century was a time of great change in portrait photography as photo-taking began to move out of the professional studio and into everyday lives. This archive exhibition highlights some of the hidden gems of our photographic collections that document this period of change and presents a glimpse into the lives and environments of the people of South Taranaki. This is the first of a series of events and exhibitions spotlighting our archives, with the long-term focus of making our collections more accessible. Supported by Taranaki Regional Council.

### **Waterways: Ngā Awa o Taranaki ki te Tonga – Hoea te Waka**

An exhibition about the region's rivers, streams, lakes, and wetlands, featuring the waka tiwai, originally from Waitōtara and recently repatriated from the Wairarapa. Mini-documentaries of interviews from members of local hapū are on show in the theatre, showcasing the relationship between them and their ancestral waterways. The story of the recent repatriation of a tiwai waka shows the process of lwi connecting to taonga, and the repatriation pōwhiri hosted by Aotea rohe for Ngāti Kahungunu and Rangitāne iwi. The waka takes pride of place at the centre of the exhibition, opening in August 2024. Supported by Taranaki Regional Council



### **Aotea Utanganui II**

After two years of building and installation, the Agricultural/Transport exhibition and storage facility on Richmond Street is now complete. Visit to see fire service vehicles, hay-making equipment and domestic items from the collection. The exhibition is accessible by appointment only. Keep updated on events via the Museum website.

**Aotea Utanganui - Museum of South Taranaki, 127 Egmont Street, Pātea | Phone: 06 273 8354**

**Facebook: [Aotea Utanganui](#) | [www.museumofsouthtaranaki.wordpress.com](http://www.museumofsouthtaranaki.wordpress.com)**

**Email: [museum@stdc.govt.nz](mailto:museum@stdc.govt.nz) | Open: 10.00 am - 4.00 pm Monday – Saturday**

---

## Gallery Pātea – Spring Exhibitions

### **Mahuru – A Spring Exhibition**

**Runs until 21 September 2024**

Spring is coming – there's a change in the value of the light, a time of rebirth, renewal, of hope and expectation, despite the mud, everything in the natural world is alive and active. A group exhibition from local artists.

**Pot luck - Open Salon: 25 September - 12 October 2024.** All creatives are welcome to submit work for display.

### **Pastels: Group Exhibition**

**16 October - 26 October 2024**

An exhibition of pastel artworks co-ordinated by Waverley artist Jenni Corbett. Pastels have been used for fine art since the times of Leonardo Da Vinci in the 15<sup>th</sup> century. Made from finely ground pigment combined with chalk and a binder, they create a wide range of hues, from intense pure pigment to softer tones. There are various forms, such as pencils, square blocks and water-soluble pastels. Despite their use as a dry medium, pastels can be used in many ways, achieving a rich 'painterly' quality in some cases, or used as a drawing tool to capture local colour. *Pictured right: Pastel artwork by Jenni Corbett*



### **The McLeods: Fiona McLeod & Rosanne McLeod-Oakes**

**30 October - 9 November 2024**

Fiona is an experienced potter from Whanganui, joining Pātea printmaker Rosanne for this exhibition. Fiona's inspiration comes from the environment near her home at Castlecliff beach, grey and blue glazes alongside pinks of the sunset. Rosanne exhibits widely in Taranaki and has created new prints inspired by Fiona's environment.

If you are interested and able to offer your time to volunteer at the gallery and help extend open hours, please get in touch. Check the Gallery Facebook page for exhibition updates and future events.

**Gallery Pātea, 56a Egmont Street, Pātea | Email: [gallerypatea@gmail.com](mailto:gallerypatea@gmail.com)**

**Open: 10.00 am - 2.00 pm Wednesday – Saturday or by appointment**

**For more information text Gabrielle Belz 021 0813 8355 | Facebook: Gallery Pātea|**

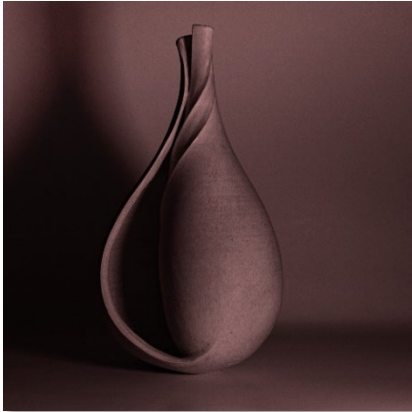


## Lysaght Watt Gallery – Spring Exhibitions

### **Brush Strokes: Hāwera Art Club**

**Until 14 September 2024**

Hāwera Art Club presents their annual members' exhibition featuring oils, acrylics, watercolour, 3D, mixed media and a collection of paper machè puppets. The club welcomes new members interested in joining for monthly activities at the Salvation Army Rooms on the first Friday of each month, 1.00 pm. An informal Open Art Group also meets on the second, third and fourth Fridays of the month, 10.00 am - 3.00 pm at the same venue. For further information phone Rosie Harrowfield 0273023995 or email [ianrosie@extra.co.nz](mailto:ianrosie@extra.co.nz)



### **New Plymouth Photography Club Print Exhibition**

**Vertical: Derek Hughes**

**Shadows and Secrets - Fantasies in Ink: Kelly Dobbs**

**16 September - 12 October 2024**

New Plymouth Photography Club promotes enjoyment and advancement of photography as a visual storytelling art form. Visit <http://nppc.co.nz>

New Plymouth's Derek Hughes' photographic work is all about the play of light, texture, line and shape. A focus on nature, with the addition of several works that reveal the influence of man. Kelly Dobbs, also from New Plymouth, exhibits a series of ballpoint fantasy drawings. Kelly's designs focus on an ominous castle set among mythical cliffs within a stormy environment, with a viewpoint from above as if flying.

*Pictured left: 'Sandstone' by David Sinclair, NPPC*

### **Trail Mix 2024: Open Studio, Taranaki Arts Trail 2024 Artists**

**Expressive Threads: South Taranaki Stitchcraft Guild**

**14 October – 10 November 2024**

For a third year, the Gallery showcases works by Taranaki Arts Trail 2024. Each artist contributes a single piece that represents their unique style. Extended weekend hours, Saturday and Sunday 10.00 am – 4.00 pm, 1 -10 November 2024. South Taranaki Stitchcraft Guild stage their bi-annual exhibition. For well over a thousand years embroiderers have created beautiful works with gold, silver, thread, precious stones and incredible detail. The Guild celebrates its 40<sup>th</sup> anniversary in 2024 so come and help celebrate this significant milestone.

Lysaght Watt Gallery is relocating to Te Ramanui o Ruapātahanga in late November. Check Facebook for updates.

**Lysaght Watt Gallery 4 - 6 Union Street, Hāwera | Open: Mon – Fri 10.00 – 4.00 pm Sat 10.00 am – 1.00 pm**  
**Website: [www.lysaghtwattgallery.co.nz](http://www.lysaghtwattgallery.co.nz) | Facebook: [Lysaght Watt Gallery](#)**

## The Village Gallery – Spring Exhibitions

### **Art by Dimphy & Arno de Vaan**

**28 August – 21 September 2024**

An eclectic collection of art created by Arno and Dimphy de Vaan. Arno creates by planning, measuring and precision work, while Dimphy takes a starting point and lets intuition direct her creative practices. Featuring hand-pulled original prints, some created with a chainsaw, andesite and clay sculpture and more. *Pictured right: Clay sculptures by Dimphy de Vaan*



### **Lampwork & Mouth-terpieces - Stephanie Timson & Jennifer Sosich**

**25 September - 19 October 2024**

Stephanie Timson is a self-taught silversmith and manager of a bead company in Sydney, Australia. She has created hand-made glass beads, also known as lampworking, for over 20 years, with work in collections worldwide.

Jennifer Sosich was born with a condition called Arthrogryposis, which affects the joints in her arms and legs. She is widely recognised for my unique artistic process, painting, needle-felting and sculpting by mouth. 'My pieces are a mixture of quirky, whimsical, a little bit naughty and spiritual. My spiritual pieces are made using clay and crystals, whilst everything else is a mix of different methods and media. For me, my art is a form of expression and healing. It's become an important part of my life and something I need to do to keep myself busy and sane'. [www.artbymouth.nz](http://www.artbymouth.nz)

### **The Potters: Donna Hitchcock and Margaret Foley**

**23 October - 16 November 2024**

The Potters are collaborating with their popular mix of garden art and other quirky pieces.

**The Village Gallery, 166 High Street, Eltham | Open: Wednesday – Saturday 10.00 am – 3.00 pm**  
**Phone: 06 764 5443 | Facebook: [Village Gallery Eltham NZ](#) | Email: [villagegalleryeltham@gmail.com](mailto:villagegalleryeltham@gmail.com)**

## from out of the blue studio gallery – Exhibitions



**'may i be i' don't try to understand it: Solo Show by Karen Johnston**  
**29 August - 7 October 2024**

**Gallery Gathering/Artist Floortalk: 2.00 pm 28 September 2024**

Works inspired by the life and creative works of American poet e.e.cummings. This exhibition of fibre artworks is developed from her understanding of and love for his contribution to our world. Mainly quilt-based with both machine and hand stitching, this exhibition is colourful and playful while still conveying some important messages on timeless topics like peace, equality, care of the environment, politics and identity.

**The Cupboard Collection: Annual Solo show by Viv Davy**

**10 October - 18 November 2024**

Works inspired by her surrounding environment and using materials from her garden. Handweaving, handmade papers, botanically printed fabrics, artist books and many more natural items created with traditional slow making techniques. Check the website for pop-up workshops and demonstrations. The gallery garden is part of The Taranaki Sustainable Backyards Trail this year.

**Time: Members of The Surface Design Association**

**21 November - 31 December 2024. Opening Event & Jurors Talk: 2.00 pm 24 November 2024**

A juried exhibition by members of The Surface Design Association of New Zealand, Australia and The African Continent. Members have submitted works that consider 'Time' from their own personal cultural constructs. Entries curated by Dr Carole Shephard ONZM. A great opportunity to see works from fibre artists practitioners from New Zealand and the world.

**Contact: Viv Davy. Phone: 021 407 424 | 18 Halse Place, Ōpunakē**

**Website: [www.fromoutofthebluestudiogallery.com](http://www.fromoutofthebluestudiogallery.com) | Open: 1.00 pm – 5.00 pm Thursday – Monday or by app.**

**Facebook: [from out of the blue studio gallery](https://www.facebook.com/fromoutofthebluestudiogallery) | Instagram: [threadthinker](https://www.instagram.com/threadthinker) | Email: [silktangles@me.com](mailto:silktangles@me.com)**

## Māwhero Studio Ōpunakē: Workshops

Artists Ruby Fitzmaurice and Ashleigh Chambers run Māwhero Studio, offering an art gallery, pottery workshops and coffee/tea. Check the website for full workshop details and to register.

**WORKSHOP: Hand-building Course for Beginners**

**Starting Thursday 17 October, 6.00 pm – 8.00 pm**

Learn this ancient pottery medium that allows you to make anything using your hands and a few simple tools. An opportunity to learn the entire process over six weeks, including glazing and firing.

**WORKSHOP: Kids Create with Clay: School Holiday Sessions**

**10.00 am Monday 30 September & Thursday 10 October 2024**

Kids can hand build their own unique creations with clay at our studio, to be glazed and fired. \$45 per child, under 6 years to be accompanied by an adult.

If you would like to host a workshop in the studio for learning a craft-based skill or other activity, get in touch.

Studio open hours will extend in summer. Open 9.00 am – 2.00 pm during the Taranaki Arts Trail (1 – 10 November).

**1/78 Tasman Street, Ōpunakē | Open: Saturdays & Sundays 8.00 am – 2.00 pm**

**Website: [www.mawherostudio.com](http://www.mawherostudio.com) | Instagram: [mawherostudio](https://www.instagram.com/mawherostudio) | Email: [mawherostudio@gmail.com](mailto:mawherostudio@gmail.com)**



## Everybody's Theatre - Ōpunakē

A historic theatre restored to its former glory. In addition to all the latest new releases, the theatre also hosts boutique screenings on the first Sunday of every month. Check the website for updated information and special events. Bookings can be made online and gift vouchers are available. Private hire of the theatre is available outside of regular screening hours, expressions of interest to host specific shows are welcome.

**Everybody's Theatre, 72 Tasman Street, Ōpunakē | Phone: 027 383 7926**

**Website: [www.everybodystheatre.co.nz](http://www.everybodystheatre.co.nz) | Email [everybodystheatre@gmail.com](mailto:everybodystheatre@gmail.com)**



## Matariki Whakairo

Matariki Whakairo is a South Taranaki venture, founded by Jordan Berry and Meka Mauriri. Trained in the art of whakairo (Māori wood carving) at Te Wānanga o Aotearoa, Matariki Whakairo are dedicated to give back to the Taranaki community. Commissions welcome to create custom carvings for a variety of occasions, including birthdays, awards, graduations, weddings, 21st birthdays, farewell gifts, businesses, schools, kapa haka groups, marae, iwi, and hapū. Additionally, they offer whakairo classes in Hāwera for people interested in learning this traditional art. To enquire about services or classes, contact them through social media platforms.

**Instagram: [Matariki Whakairo](#) | Facebook: [Matariki Whakairo](#)**

## Stratford Art Society

Stratford Art Society is a well-established art group in the heart of Taranaki. Membership is open to all visual artists in Taranaki. Members receive many benefits, including newsletters, inclusion in two group exhibitions a year at Percy Thomson Gallery (the next one is in November 2024) and opportunities for Market Days & workshops. Membership is \$25 annually. Membership forms can be picked up at Percy Thomson Gallery or by email. Check for regular updates on social media.



**Email: [stratfordartsoc@gmail.com](mailto:stratfordartsoc@gmail.com) | Facebook: [stratfordartsocietytaranaki](#) | Phone: Secretary 027 777 3473**

## Percy Thomson Gallery – Spring Exhibitions

### **Adam Portraiture Award 2024 Runs until 13 October 2024**

The Adam Portraiture Award is Aotearoa's most prestigious and popular portraiture prize. The biennial competition for painted portraits is held at The New Zealand Portrait Gallery Te Pūkenga Whakaata and generously sponsored by the Adam Foundation. The Adam Portraiture Award provides painters from Aotearoa at all stages of their careers with the opportunity to showcase their talents on the national stage, while also playing an important role in recording the changing face of Aotearoa.



*2024 Adam Portraiture Award Winner, by Maryanne Shearman  
Tuhi-Ao, 2024. Oil on canvas*

### **Fibreworks: Taranaki Creative Fibre & Margaret Scott: 700 x 700 19 October - 10 November 2024**

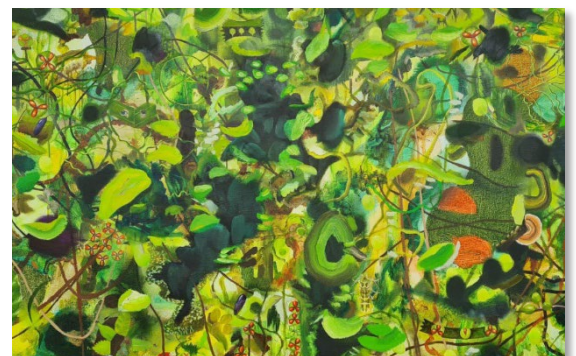
The biannual exhibition of fibre works created by Taranaki's group of creative fibre enthusiasts. In Gallery 2, Margaret Scott will complement this exhibition with her own solo exhibition, entitled '700 x 700'. These two exhibitions will occur during the Taranaki Garden Festival and the Taranaki Arts Trail.

**Percy Thomson Gallery, 56 Miranda St, Whakaahurangi Stratford | Director: Laura Campbell  
Open: Monday - Friday 10.00 am - 4.00 pm. Saturday - Sunday 10.00 am - 3.00 pm | Phone 06 765 0917  
Website: [www.percythomsongallery.org.nz](http://www.percythomsongallery.org.nz) | Facebook: [Percy Thomson Gallery](#)**

## Puke Ariki – Spring Exhibitions

### **Home Work Maunga Auaha: Taranaki Art 2024 Runs until 10 November 2024 - Ground Floor, Puke Ariki Museum**

Taranaki art of the present moment takes centre stage in this expansive celebration of local talent. Over seventy artworks by established and emerging artists will inspire visitors and highlight the creativity that this region inspires through its natural beauty, and extraordinary history. The selection has been made by prestigious guest judges artists Lisa Reihana, Michel Tuffery and Justin Morgan of Puke Ariki. Taranaki as reimagined by our artists in paintings, photography, intricate weaving, chiselled stone and digital imagery. Explore personal stories, origins and our collective experiences, as artists contemplate what it means to be here, in this place, in these times. Visit the website for artist information and events.



*Painting by Leighton Upson (detail)*

**Puke Ariki, 1 Ariki Street, New Plymouth | Phone: 06 759 6060 | Open: 10.00 am - 5.00 pm 7 days | Free Entry  
Website: [www.pukeariki.com](http://www.pukeariki.com) | Facebook: [Puke Ariki: Museum-Library-Visitor Information](#)**



## Gover Street Gallery News

Gover St Gallery is community-driven with artists' studios, monthly exhibitions and engaging workshops – a must-visit destination when in New Plymouth.



**SEPTEMBER:** Exhibitions by Daphne Carter, Melissa Lovegrove, Stephen Komene, Jane Hodgson, Stephen Lyttelton, Brendan Laurence.

**WORKSHOP: Sgraffito Workshop with Janine Rata**  
**Saturday 14 September 2024**

**NPBHS Art Auction: Saturday 21 September 2024 – Doors open 5.00pm, Live Auction starts 7.00pm**

Works by over 35 local artists. Auction list available at Gover St Gallery from 18 September. \$20 tickets.

**The Big Exhibition: 28 September - 30 November 2024**

**Opening Event: 6.00 pm 27 September 2024**

A celebration of 5 years of the Gallery with artwork by established and emerging from Taranaki and beyond.

**OCTOBER:** Gover St Gallery will open on Sundays 12 - 4pm up until Christmas.

**WORKSHOP: Mandala Dotting Workshop with Mariana Melo - Saturday 12 October 2024**

**NOVEMBER:** The gallery will host nine artists for the Taranaki Arts Trail, 1-10 November. Open 9.00 am – 5.00 pm. Brenda Cash, Suzan Kostanich, David Rogers, Gaye Atkinson, Rachel Joy, Heidi Griffin, Holly Smith, Mrs D and Veronica Tee.

**19 Gover Street, New Plymouth | To exhibit, register, enquire, contact Heidi on 06 757 4278**

**Open: Monday – Saturday 10.00 am – 4.00 pm. Sundays 12 noon – 4.00 pm**

**Facebook/Instagram: Gover Street Gallery | Email: [goverstgallery@gmail.com](mailto:goverstgallery@gmail.com)**

## Creative New Zealand

Creative New Zealand is the national arts development agency developing, investing in and advocating for the arts. CNZ recently announced its new programmes for 2024. The eight new funding and support opportunities are tailored to three distinct groups: early career artists, artists and practitioners, and arts groups and organisations and will replace the existing contestable grants programme. Visit [Funding and support](#) for more information.

[Sign up](#) to receive news and updates via email.



**For updates and information on all Creative NZ funding, visit the [website](#)**



### The Big Idea

The Big Idea is the largest, leading online resource for the arts in New Zealand, providing artists with daily news updates, the latest jobs and opportunities and events as well as ideas and inspiration from across the creative industries to help you create your own success. The Big Idea recently launched a series of online resources to support the arts sector. [The Learning Network](#) is based on six years of delivering mentoring and development programmes in Tamaki Makaurau, now available as an informative and supportive online resource for Aotearoa artists.

**Website: [www.thebigidea.nz](http://www.thebigidea.nz)**

**Would you or your group like to have information included in the next edition of Te Tohu a Toi – STATE OF THE ARTS?**

Please send text and photographs for the Summer Edition (December 2024 & January / February 2025) to: Michaela Stoneman, Arts Co-ordinator: [michaela.stoneman@stdc.govt.nz](mailto:michaela.stoneman@stdc.govt.nz)

**Send information by: Monday 18 November 2024**

**Publish date: Monday 2 December 2024**



To unsubscribe to *State of the Arts*, please [email Unsubscribe](#) in the subject line.