

state of the arts

South Taranaki Arts Bulletin # 39

Autumn 2020

| Art News | Opportunities | Exhibitions | Art Events |

Haere mai

Welcome to our Autumn edition of *State of the Arts*.

It has been great to see the recent progress and completion of the **Hāwera Railbridge Project**. This mural commission was a complex one, involving many aspects of project management - including collaboration, creativity, consents and consultation. Well done to all the teams of people involved and to the artist, Dan Mills for successfully navigating and transforming this challenging site. The result is a striking entry to Hawera that reflects our history, environment, people and place.



Northbound view of the Hawera rail bridge



Another new mural popped up in the main street of Ōpunakē in mid-December. Created by local artist Chris Fuller, the artwork reflects his love of our coastal environment and surfing. Chris – pictured left with his mate Tahi - created this mural in a very short timeframe - he had the idea, saw the wall, got permission and support and painted it! Ka pai Chris.

It's positive to see many new creative workshop opportunities and spaces throughout the district. **Toi O Taranaki Ki Te Tonga, South Taranaki's Māori Arts Collective** are inviting Māori artists to join them for a three-day wananga in Manaia over Taranaki Anniversary weekend. **Out of the Blue Studio** in Ōpunakē are offering a range of adult workshops with in-house

and guest tutors, including a weekly 'Fibre Camp' for young artists. **Tūāpapa Studios** has opened in Pātea, offering traditional Tā Moko and Toi Māori, as well as forging positive connections with local schools, community and artists.

An exciting initiative coming up in April is the inaugural **Bring an Artist to School Day** hosted at Ōpunakē High School. The day offers the opportunity for 45 Art and Photography students from OHS and Pātea Area School to pair up with Taranaki artists to converse, collaborate, share lunch and enjoy presentations and discussions to inspire and build relationships. Organiser Andy Bedford is stoked to have received such a positive response from high calibre artists willing to connect with this kaupapa – an indicator of the generosity and support within our vibrant arts community.

We are lucky to have art, theatre, cultural and heritage groups in many of our towns in South Taranaki. I encourage you to get into it - join up, get involved, make real connections with people and above all, enjoy yourself ☺

Ngā mihi,

Michaela

Michaela Stoneman | Arts Co-ordinator | South Taranaki District Council | 0800 111323
michaela.stoneman@stdc.govt.nz | www.southtaranaki.com

South Taranaki Creative Communities Funding

The South Taranaki Creative Communities Scheme provides funding assistance for community-based arts activities in South Taranaki that meet one or more of the following funding criteria:

Broad community involvement - A project that will create opportunities for local communities to engage with and participate in arts activities.

Diversity - A project that will support the diverse arts and cultural traditions of local communities, enriching and promoting their uniqueness and cultural diversity.

Young people - A project that will enable and encourage young people (under 18 years) to engage with and actively participate in the arts.

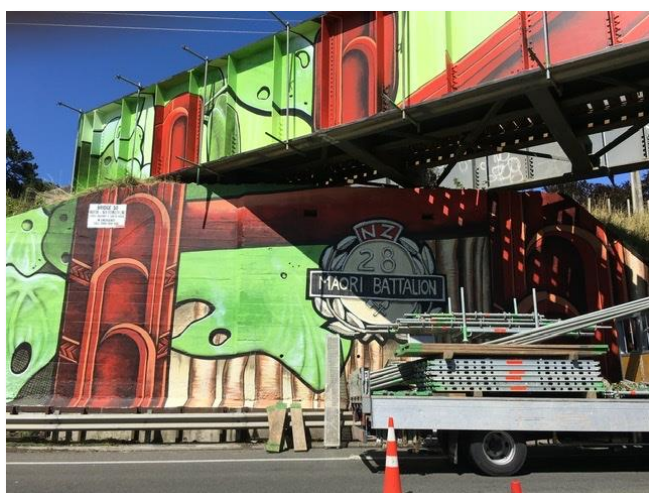
The next Creative Communities funding round closes on 27 March for projects that do not start before 16 April 2020.

Round 1 of 2020-2021 opens on 29 July, closes on 9 September for projects that start after 1 October 2020.



For detailed information and forms, please visit the link [here](#)

Any enquiries of to discuss an application, email funding@stdc.govt.nz or phone 0800 111 323 or 06 278 0555



Hāwera Rail Bridge – Mural Project

The Hāwera Railbridge, acknowledged entranceway to Hāwera township, has long been an ugly, graffitied structure in much need of a facelift. Over the years Council staff have brainstormed ideas for a mural across the façade and after lengthy consultation with iwi, hapu, NZ Kiwirail, NZTA, South Taranaki District Council and potential funders it has all come to fruition. Whanganui artist Dan Mills' proven experience working on rail bridges and his solid reputation with NZ Kiwirail was a factor in getting the project over the line. Comfortable working on large structure as well as canvas and with sculpture, Dan's work is seen around the world from Paris to Canberra, Slovakia and New Zealand.

For the Hāwera project, Dan worked with hapu and Council to recognise the aspects of the area important to them, and created a design which is meaningful, whilst also vibrant and attractive. Kawakawa, surf, cabbage trees and whaharoa combine to vastly improve and beautify the entrance to Hāwera. Under the bridge a large motif of the 28th Māori Battalion is prominent – acknowledging the men who served during World War II, particularly the South Taranaki Māori in D Company. Other than a few names on a Pātea Memorial, there has been little mention of these brave men in our district. Council and Te Hāwera Community Board have financially contributed to the project, as have Hāwera BizLink and NZ Kiwirail. The Project Manager Matthew Banks from Buildmaster Ltd, together with Traffic Management Solutions and Dan Mills himself, have been in the picture from late 2017 and we appreciate their generosity in holding their four-year-old quotes while planning and consultation has been conducted. While the Hāwera Mural Project has been initiated by Council, it is fair to say that everyone working on the project has given significant skin to the game to bring the project to completion. The Mural Project not only achieves its goal to rid the bridge of graffiti, it also addresses the importance of promoting public art as a way to bring communities together.

Ronald Hugh Morrieson Literary Awards 2019

Free Short Story & Poetry Workshops: Saturday 13 June 2020, Hāwera

Competition closes: 14 August 2020

Taranaki writers will benefit from the skills of leading contemporary novelists and poets for this year's annual Ronald Hugh Morrieson Literary Awards. Whiti Hereaka will judge the short story section and Glenn Colquhoun will judge the poetry category. Taranaki writers and secondary school students can participate in free workshops with the judges, author chats and poetry nights in June, and are encouraged to enter the competition.

For more information visit the website: www.rhmorriesonawards.com



Arts Fest South Taranaki 2020

28 October – 7 November 2020

Arts Fest South Taranaki is a biannual festival held over our district. The focus is to actively promote our District galleries and studios while providing opportunities for the community and visitors to our region to engage in the arts. The festival coincides with the *Taranaki Garden Festivals*, *Taranaki National Art Awards*, *The Great Ōpunakē Yarn Bomb* and the *Ronald Hugh Morrieson Literary Awards*. There are no fees to be a part of Arts Fest South Taranaki and most of the listings are free for visitors to enjoy. The *Arts Fest* website is still active from the 2018 event, serving as an online reference to galleries and studios in South Taranaki and as an archive. The South Taranaki District Council Arts Coordinator will connect with the arts community over the coming months to establish the 2020 festival.



Website: www.artsfestst.co.nz



Arts on Tour NZ – Austen Found

7.00 pm 21 May 2020

Lakeside Playhouse, Ōpunakē

Addicted to Darcy? Lost all Sense and Sensibility? Get ready to enjoy an entirely improvised musical in the style of Jane Austen. *Arts on Tour NZ* favourite Penny Aston is back with her most excellently accomplished friends - world famous hobbit Lori Dungey and melodic Chicago based musical maestro Robbie Ellis.

The trio will use audience suggestions and spin instant literary magic as they swoon, romp and pianoforte.

Tickets available from South Taranaki i-SITE from May 2020. Phone: 06 278 8599

Pātea Pou Project – Update

The Pātea Pou Project is a collaboration between Project Reef Life, students from Pātea Area School, local engineers & the STDC Arts Co-ordinator. Students worked on seven designs to transform the existing wooden poles on Pātea Golf Club land on the road down to Mana Bay, Pātea in 2019. The designs feature elements that reflect the diversity and life in the ocean environment, specifically the reef 11km offshore from the Pātea coast. The team recently had the opportunity for an onsite visit to Reids Machining and Engineering in Hāwera, to see the process behind laser cutting the designs into cortene steel. Next, a robust mounting system will be fabricated to withstand the elements of the site for this public artwork, with installation planned for later this year. The project is funded and supported by the South Taranaki Creative Communities Scheme, Project Reef Life and South Taranaki District Council.



Pātea Area School students and Karen Pratt from PRL.



Toi O Taranaki Ki Te Tonga – Wananga Invitation

7 – 9 March 2020

Manaia, South Taranaki

Tēnā tātou ngā ringa toi, ngā mihi o te wā pōhutukawa kia tātou. Toi O Taranaki Ki Te Tonga, South Taranaki's Māori Arts Collective, invites Māori artists 13 years and over to a dedicated three days of art making and whanaungatanga in Manaia during Taranaki Anniversary weekend. This wānanga is purely a time for artists to focus on their own practice and projects and/or to create works for two upcoming exhibitions. Also, as Sunday 8 March is International Women's Day, the group will spend some time that day sharing kōrero which empowers wahine - walking the talk! Mēnā ka pirangi, kā wātea hoki, nau mai, haere mai. He mihi hoki kia STDC Creative Communities mo te pūtea tautoko.

For more information and venue please email Bonita Bigham: email_bonitab@xtra.co.nz

South Taranaki Heritage & Family History Week

28 March – 3 April 2020

Family History Expo: 10.00 am – 4.00 pm, 28 March 2010

Community Centre, Albion Street, Hāwera

Celebrating local history and heritage in South Taranaki, organised by the Hāwera Genealogy Society. Launched by a Family History Expo, featuring a range of exhibitors such as Family History Societies, cultural groups, DNA talks and 'how to' family history videos. Throughout the week offers a range of historic walks, talks, exhibitions tours and a book launch around South Taranaki towns.

Full programmes are available at South Taranaki i-SITE, LibraryPlus branches or by email request.



Email: hawerageneology.org.nz



Creative Space
South Taranaki

South Taranaki Creative Space

Creative Space organisations provide space, resources and assistance in ways that lead to self-expression, empowerment and self-development through making art or participating in artistic activities. *South Taranaki Creative Space* offers children's and adult's creative classes, holiday programs and workshops. There are also opportunities available to host other creative groups in the community such as art and writing groups. The tutors recently hosted students from the Endeavour Centre at Hāwera High School, creating personal artworks for their art folders. Workshops are advertised in the front window of the premises and on Facebook, along with class details. Please contact Carl and Erryn by phone or email with all enquiries.

41 Princes Street, Hāwera | Phone or text: 027 361 6930

Facebook: [South Taranaki Creative Space](https://www.facebook.com/southtaranakicreativespace) | Email: southtaranakicreativespace@gmail.com

Hāwera Repertory News

God of Carnage

20-28 March 2020 - Repertory House, 59 Collins Street, Hawera

Written by Yasmina Reza, this thrill-ride takes you into the most dangerous place on earth: parenthood. An innocent squabble over a playground incident becomes an all-out, fur-flying, hilarious brawl between the two couples. *God of Carnage* stormed Broadway nabbing the 2009 Tony for Best Play and has since been made into a film. Directed by Clive Cullen, the cast is Ron Scott, Donnella Weir, Antony Jones and Helen Snooks. Tickets are \$28, book tickets online [here](#). To reserve wheelchair seating please book through South Taranaki i-SITE 06 278 8599.



Later this year, the Society will stage *Bugsy Malone*, completely built using a cast and crew of students in years 7 to 13. "Each department head will mentor a youth" says show director Samantha Turner. "The students chosen will shadow their mentor from production beginning to end, getting the unique opportunity to explore different aspects of theatre while adding to their resumes and experience". The youth production has recently been cast, but there are still opportunities for local teens to be involved. The performance season will run from 30 June - 4 July 2020 at the Hāwera Memorial Theatre.

For more information contact hawerarepory@gmail.com or visit www.hawerarep.org

Theatre Trust Singers

Theatre Trust Singers are a community choir of 30 singers from Hāwera and surrounding towns. The group has performed at Anzac services, Carols in the Park and the 2019 show *Let's Twist Again*. The choir are keen for more singers to join, especially more male voices, but anyone who enjoys singing is welcome. Rehearsals are on Tuesday nights from 7:00 pm - 9:00 pm at the theatre. Auditions are not required to become a member and the ability to read music, although helpful, is not necessary. Become a *Friend of the Theatre* to support the work of the trust - forms can be downloaded [here](#).



Contact: Judy Brown on 06 278 5834 or Email: judy-brown@xtra.co.nz

Email: haweratheatrefriendstrust@weebly.com | Website: <https://haweratheatrefriendstrust.weebly.com>

Lysaght Watt Gallery – Autumn Exhibitions

Collectives

4 – 28 March 2020

Opening Event: 6.00 pm Wednesday 4 March 2020

Featuring works by artists from two South Taranaki Artist Collectives, Ōhawe Creative Community & Ōpunake Galleries & Studios. *Collectives* is curated by STDC Arts Co-ordinator Michaela Stoneman, presenting diverse works by sixteen artists from two local communities. All welcome at the opening event for an opportunity to meet the artists.



Katie Hedgman-Dalton: How to be Lost/Found

Jennifer Sosich: The Universe Speaks

20 March – 25 April 2020

Whanganui born mixed media artist, Hedgeman-Dalton's recent works are small-scale 3D installations using organic and inorganic found materials, relating to her search for identity, whakapapa, and purpose. Sosich is an Eltham based mouth-artist, working in both paint, sculptural and mixed media techniques. The work in this exhibition will relate to her personal world view, intuition, spirituality and the whimsical side of her creativity.

Tū Tama Wāhine o Taranaki – 30 Years of Liberation Work

28 April – 23 May 2020

Tū Tama Wāhine o Taranaki is celebrating its 30th anniversary with a photographic exhibition of wāhine pūkauae connected to the organisation, photographed by Taranaki artist, Tania Niwa. This New Plymouth based organisation is distinctly wāhine led and dedicated to Rangatiratanga. The exhibition captures personal symbols of cultural resistance while celebrating the art of pūkauae as a ritual for indigenous healing and regeneration.

Lysaght Watt Gallery 4 - 6 Union Street, Hāwera

Website: www.lysaghtwattgallery.co.nz | Facebook: [Lysaght Watt Gallery](#)

Open Monday - Friday 10.00 am - 4.00 pm Saturday 10.00 am - 1.00 pm | Phone 06 278 7611

The Village Gallery - Summer Exhibitions

Inspired by Nature

Until 9 March 2020

Solo pottery exhibition by Graham Mulvay from New Plymouth. Graham's organic sculptures and decorative pieces are influenced by the colours, forms and textures to be found in nature.



Collage by Holly Smith

Spoilt for Choice

10 March - 3 April 2020

Five invited artists present a selection of art, each working in a different medium; Caryl Murray (mixed media painting), Elizabeth Harrison (printmaking), Holly Smith (collage), Jeanette Verster (fibre) and Andrea Nicholas (acrylic and oil painting).

The Aussie Influence

6 April - 1 May 2020

Two Australian-born artists combine in this exhibition. Now living in New Plymouth, Glenys Howland was born in Brisbane. Her work is mainly conceptual, her ideas coming from her memories of her childhood in Queensland and life experiences in general. Ian Littlewood, now living in Inglewood, was born in South Australia and his artworks are often impressionist depictions of landscapes in acrylic, oil, pastel or mixed media, many showing the 'Aussie Influence' in terms of the colours, landforms, trees and buildings he paints.

Overflow

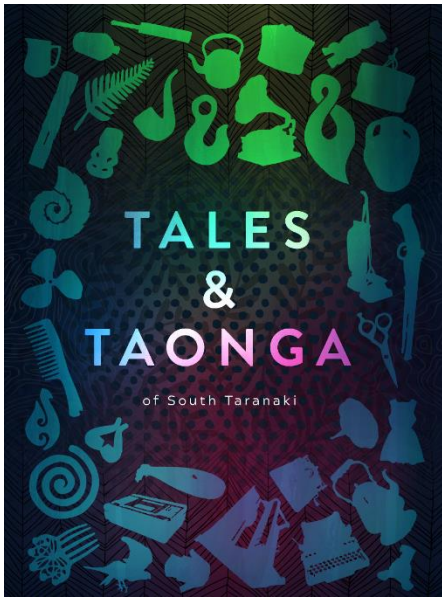
4 - 29 May 2020

Featuring a variety of Taranaki artists working in diverse media and subject matter.

The Village Gallery, 166 High Street, Eltham

Open: Monday - Saturday 10.00 am - 3.00 pm (except Saturdays between exhibitions)

Facebook: [Village Gallery Eltham NZ](#) | Email: villagegalleryeltham@gmail.com



Aotea Utanganui – Museum of South Taranaki

Tales and Taonga - Whakapukapuka

Aotea Utanganui is publishing an iconic book to celebrate South Taranaki tales and taonga. These stories will capture the very essence of local people and will be supported by taonga from various public and private collections. This rich publication will document the achievements of early pioneers, Tangata Whenua and into the current generation. Featuring hundreds of captivating photographs that bring the heritage collections to life and celebrates our unique identity. An exhibition featuring taonga from the collections will be launched alongside the book, featuring interesting pieces rarely seen, all with a historical significance to South Taranaki. Check the Facebook page for updates on the book launch.

Cinema: New Zealand Wars (1998) - Taranaki Prophets (Episode 4)

New Zealand Wars Documentary of the Turuturu Mokai battle as part of the South Taranaki Land Wars of 1860-1872. Discover why it was necessary for ancestral Māori to fight, and why after 150 years, their descendants endure.

The New Zealand Wars series takes a new look at the history of Māori vs. Pākehā armed conflict and focuses on Riwia Titokowaru and the battle of Turuturu Mokai in 1868. This series is written and presented by the noted New Zealand historian James Belich. Daily Screenings, March - May 2020

South Taranaki Heritage Week: 28 March – 3 April 2020

A pop-up exhibition showcasing a small selection of objects, photographs and ephemera from the northern region of South Taranaki (Ōpunakē, Pungarehu and Rahotu) at the Ōpunakē LibraryPlus. This exhibition has an interactive element for the public within the photography section – the Museum is seeking present day photography of the historic landscape photos from the collection, taken from the exact same spot (please keep personal safety in mind).

Learn to use 'Papers Past' as a research tool - Bronwyn Wattrus will be host a workshop to help researchers grasp how to use the online site. She will share her working knowledge of the website and tricks she has learnt over the years.

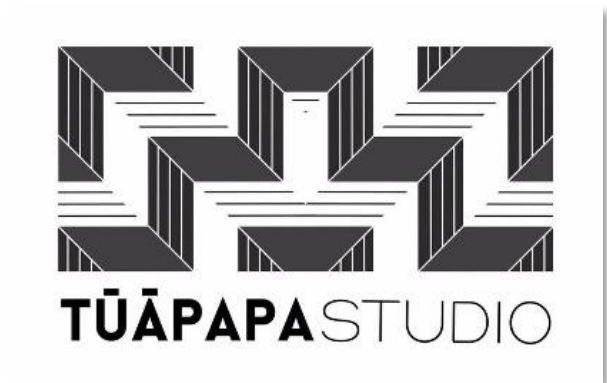
Aotea Utanganui - Museum of South Taranaki, 127 Egmont Street, Pātea | Phone: 06 273 8354

Facebook: Aotea Utanganui | www.museumofsouthtaranaki.wordpress.com

Email: museum@stdc.govt.nz | Open: 10.00am - 4.00pm Monday – Saturday

Tūāpapa Studios Ltd – Pātea

Tūāpapa Studios is a Pātea based creative social enterprise. Established in 2019 by local artist Luther Ashford and Navajo Hibbs, the aim is to provide a South Taranaki creative hub for Tā Moko, Toi Māori and for community brainstorming and projects to be carried out. Luther Ashford is a graduate of the Māori Visual Arts programme offered as Massey University, with her work currently reflecting environmental issues in Pātea and surrounding regions. Navajo Hibbs is a Tā Moko artist who studied his craft through 'Te Kahui Torea' collective under tutorship of expert Tā Moko artist Heemi Te Peeti. Commissions and custom designs are welcome.



Open: 11.00 am – 5.00 pm Tuesday – Sunday or by appointment

56b Egmont Street, Pātea | Phone: 027 591 3611 | Email: tuapapastudio@gmail.com | Facebook: Tuapapa Studios Ltd.



Pātea Open Mic Sessions

12 noon - 4.00pm, Last Saturday of every month. Aotea Utanganui, Pātea

Join the museum team and local musician Kimba Mallows for the Pātea Open Mic Sessions held at Aotea Utanganui. Come along and try out your skills with other talented local musicians, singers and performers. This day is open to all skill levels and offers a chance to jam with others. Fun for the whole whānau.

Facebook: Patea Open Mic | For information, contact Kimba Mallows 027 640 8137



Three Fat Fantails by Teresa Schrider

Gallery Pātea

Gallery Pātea was established in 2016 as a non-profit organisation to promote and provide to an outlet to support local artists and crafts people. The gallery welcomes expressions of interest from artists to exhibit and sell their work. A program of workshops for young artists and adults will be set in place later this year – check the Facebook page for updates. During the past year more local artists have shown their work at the gallery, showcasing a positive Pātea.

*Nau te rourou, naku te rourou ka ora nga tangata
By co-operative enterprise we all benefit.*

If you are interested in joining, volunteering or supporting Gallery Pātea, please call in or get in touch.

Gallery Pātea, 58 Egmont Street, Pātea | Open: 10.00 am - 4.00 pm Tuesday - Saturday

For more information contact Gabrielle Belz 021 0813 8355 | Facebook: Gallery Pātea | Email gallerypatea@gmail.com

Kete Aronui Closes – Ōpunakē Framing Studio Opens

After providing an outlet for more than 100 Taranaki artists and makers to sell their work, Kete Aronui Gallery in Ōpunakē has closed its doors at the completion of their lease term in February 2020. Owners Monica and Scott Willson extend a huge thank you to all the artists and customers who supported the gallery.

The custom picture framing studio run by Monica Willson has re-opened at 20 Gisborne Terrace, Ōpunakē. The studio offers a wide range of framing options for prints, posters, photography, original artwork, certificates and memorabilia. Display your favourite pieces in style with quality framing at affordable prices. The studio is open seven days a week by appointment or Monica is able to come to you. Great rates are available for artists.



Ōpunakē Framing Studio: 20 Gisborne Tce, Ōpunakē | Website: www.opunakeframingstudio.com



Great Ōpunakē Yarn Bomb 2020

The Ōpunakē Lakeside Lions are already working hard on this year's upcoming Great Ōpunakē Yarn Bomb. This year it will run from 30 October to 8 November. The community group welcome contributions of knitted and crocheted items for display. Specifically, they are currently seeking items to dress street poles that measure 47 cm width and 220 cm height. Please make contact if you have any questions or would like to contribute to this vibrant, fun and colourful display throughout the Ōpunakē CBD.

**For more information contact Monique Sinclair - Email: sinclairlect@xtra.co.nz
Facebook: The Great Opunake Yarn Bomb**

Life Drawing Group

**7.00 – 9.00 pm Tuesday Evenings
86 Tasman Street, Ōpūnake**

Regular open sessions of life drawing with a model, with structured drawing time sequences. All welcome to join this small group of artists. Please bring paper and drawing equipment. \$10 waged/\$5 unwaged per session. All levels of experience welcome.

For more information contact: Marianne or Roger 06 274 5713



Out of the blue Studio & Gallery

2 Day Workshop: Votive Vessels - Guest Tutor, Ailie Snow 8 & 9 May 2020

Ailie will help you create a delicate cylindrical vessel to your own design, using techniques demonstrated by the tutor, which include needle felting, hand stitching, distorting fabrics, applique and beading. Contact the studio to book your place. An accompanying exhibition of Ailie's work will be presented in the gallery, running from 7 – 25 May 2020. Check out Ailie's work on her website: www.alliesnow.com



Vessels by Ailie Snow

Call for Entries: FABRIC-ated

16 April - 4 May 2020. Opening Event: 5.00 pm Friday 17 April 2020

This inaugural annual exhibition will highlight and display textile making in New Zealand today. All artists using fabric or fibre (including paper) can enter artwork - the only criteria is that the work has been created by hand processes. Free entry, artworks can be for sale. For full terms and conditions, entry details and dates, please contact Viv Davy.

Term One 2020: Fibre Camp - Every Thursday afternoon after school until 5.15 pm

Designed for 8-12 year olds to explore fibre. Projects can include learning to knit for the Ōpunakē Yarn Bomb, weaving a cat mat or stitching a personal patch for your backpack. A safe but stimulating weekly workshop with lots of take-home satisfaction through unique projects. \$10 per session, all materials supplied. Pre-registration essential.

Coiled Basket Making with Guest Tutor, Ann-Maree Karam - Saturday 7 March, 9.00 am – 12 noon

Learn how to take materials from your own garden and foraged treasures from your walks to create unique and exquisite coiled baskets. These can be functional or decorative depending on your personal vision. A wonderful environmentally supportive creative experience - not to be missed. \$50.00 per person, includes materials. Pre-registration essential.

Paper-making from Native Plants - Saturday 4 April, 9.00 am – 12 noon

Using native plants such as Kawakawa, cabbage tree and griselinia, learn to make sheets of paper that can be used for all kinds of projects. Combine the plant pulps with reclaimed paper, abaca and cotton linters to create unique surfaces and textures for painting, printing, stitching and sculpting. \$60.00 per person, includes materials and equipment.

Contact: Viv Davy. Phone: 021 407 424 | 18 Halse Place, Ōpunakē

Open: 1.00 pm – 5.00 pm Thursday – Monday or by appointment

Facebook: from out of the blue studio gallery | Email: silktangles@me.com

New Ōpunakē Mural

A new community mural created by two local artists this summer was all about having fun. Friends Kirsty Meynell and Rhonda Crawford wanted to brighten up a dull wall with humour. Crawford says "We did it off the cuff; it just evolved during an afternoon and one morning. It was great, two friends having fun, wanting to get a smile from everyone". The mural is situated outside Arty Tarts Café, before you enter the courtyard garden of Rhonda Crawford's art studio on Tasman Street.



Everybody's Theatre

Boutique Nights - First Sunday of the Month

1 March, 5 April, 3 May 2020

Get some friends together and enjoy a wine or beer with some tasty treats at our Boutique Nights. \$28 per person. Ticket includes movie, one drink and snacks. Bar facilities available, no BYO. Check the website for full details of upcoming screenings.

Cottage Rest Home Fundraiser: Taranaki Anniversary Day, Monday 9 March 2020. 1.00 pm, *Emma*. 7.00pm, *1917*.

Easter Bunny is Visiting! 1.00 pm 11 April 2020, *The Queens Corgis*.

Anzac Day: 1.00 pm 25 April 2020 - *A Hidden Life*

International Pet Day: 1.00 pm April 26th - *Peter Rabbit 2*. Please bring a can of pet food to donate for the SPCA

Mothers Day High Tea: 1.00 pm 10 May 2020 - This Town (Only 40 tickets available)

Everybody's Theatre, 72 Tasman Street, Ōpunakē

Email: everybodystheatre@gmail.com | Website: www.everybodystheatre.co.nz



Hāwera Brass Band

Rehearsals: Sundays 1.00 pm – 3.00 pm, some Wednesday nights 7.30 pm - 9.30 pm.
Junior Band: Wednesday's 6.00 pm - 7.00 pm

A community brass band located in Hāwera, South Taranaki. The Band has a core group of committed local members, keen to welcome new people. The Band are currently seeking a Kit Drummer, Percussionists, solo Cornet and Tuba players. If you can read music, play piano or keyboard or just have rhythm please express your interest. The Band performs concerts, local events and occasionally attend a brass band contest. Rehearsals are held the Hāwera Pipe Band Hall on Caledonia St, Hāwera – all welcome.

Facebook: [Hāwera Brass Band](#) | Contact: [Karl Anderson 027 461 616](#)



Mountain and ranges from Komene Beach by Paul Hutchinson

range of Taranaki artists and bi-annual exhibitions. Facilitated by artist Dale Copeland, regular newsletters offer local and international opportunities to exhibit and other creative projects to participate in.

For more information, visit: www.virtual.tart.co.nz

Virtual TART News

Coasties

6 March – 1 April 2020

Koru on Devon Gallery, 89 Devon St West, New Plymouth

An exhibition by 12 established artists from the coastal area of Taranaki, between Oākura and Puniho - Alby Carter, Dale Copeland, Waldo Hartley, Paul Hutchinson, Graham Kirk, Peter Lambert, Fay Looney, Linda McFetridge, Steve Molloy, Margaret Scott, Leonie Smith and Michael Smither. See the full show online on the Virtual Tart website until the end of April. A full colour souvenir booklet is being produced by Puniho Art Press to coincide with this exhibition. Online link [here](#).

Virtual TART is an online gallery showcasing work by a wide

Taranaki Arts Trail 2020

5, 6 & 7 June 2019

Established in 2014, the Taranaki Arts Trail provides the public with the unique opportunity to meet with over 60 artists in their studio/workshops. Ultimately, the aim of the Taranaki Arts Trail is to build a greater understanding in the community of the processes involved and the skills required in creating a work of art. Admission and brochures are free for visitors. All artists feature one work in an exhibition at Percy Thomson Gallery in Stratford, offering a great starting point for Trail visitors. This year there are seven South Taranaki artists participating.



Contact Taranaki Arts Trail Co-ordinator: 021 0236 8709 or Email: taranakiartstrail@gmail.com
Website: www.taranakiartstrail.co.nz | Facebook: [Taranaki Arts Trail](#)

Quirky Fox Gallery



Absence & Desire - Rochelle Marshall

Debut NZ exhibition of this internationally published photo artist. Moody and intimate, combining elements of costume design, self- portrait, photography and digital painting.

Deconstructed Sunsets - Santie Cronje

Taking sunset hues and layering them over delicate images, Cronje steps away from her known style in these multimedia images. From 25 March 2020

Pack – Richard Wells

Bronze sculptor Richard Wells returns with a new collection of man's best friend in his April exhibition.

Quirky Fox, 205a High Street, Hāwera | Phone: 06 2786909
Open: Monday - Friday 9.30 am - 5.00 pm Saturday 10.00 am - 12 noon
Website: www.quirkyfox.co.nz | Facebook: [Quirky Fox](#)

WITT Art & Design Courses

The Western Institute of Technology (WITT) in New Plymouth are currently offering two Arts & Design courses for 2020.

NZ Certificate Art & Design (Level 4)

Start date: 2 March 2020 (15 week semester)

Develop your creativity with core courses in Visual Arts, Digital Media, 2D Studies and New Zealand Art giving you the skills to pathway onto further studies. A hands-on studio based programme. Open entry.

NZ Diploma in Art & Design (Level 5)

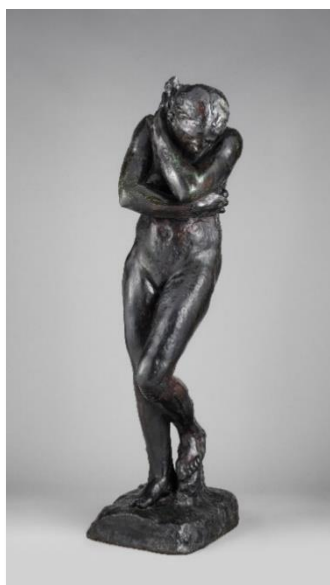
1 year: 2 March – 13 November 2020

This qualification is designed for learners who wish to further develop their practical and conceptual skills and knowledge in arts, crafts and/or design. New Course Titles are: Drawing, Painting, Art & Design Practice, Art & Design in Context.

For more information or to enrol, visit: www.witt.ac.nz/Courses/Arts-and-Design/



Percy Thomson Gallery - Spring Exhibitions



Remembering Rodin - Toured by Te Papa Tongarewa, Museum of New Zealand

State of the Arts (Hanging with Rodin) – Curated by Rhonda Bunyan

ENGRAM – Memory Trace

Until 26 April 2020

Three exhibitions run concurrently. *Remembering Rodin* showcases New Zealand's most significant Rodin sculpture, *Eve* (pictured left). Completed by the French Master sculptor in 1882, 15 bronze copies were cast in 1959, one purchased by the National Museum of New Zealand, now Te Papa. The exhibition includes a lithographic portrait of Rodin (1914) by his famous contemporary Pierre-Auguste Renoir, and a rare leather-bound edition of Gustav Coquiot's Rodin (Paris 1915) with 15 hand-tipped photographs. A short video tells the story of Eve and the process of casting the bronzes.

State of the Arts will show new work by Taranaki artists who the curator sees to be 'pushing artistic boundaries' with the development of new techniques, style or concept. The exhibition will include a number of Taranaki sculptors.

ENGRAM is a photographic exhibition by Rhonda Bunyan, exploring the nature of shapes, patterns and shadows in water and sand, to create ghostly black and white images, luminous and dreamlike, akin to what she perceives 'memory traces' to be in her own brain.

Percy Thomson Gallery, Miranda Street, Stratford | Director: Rhonda Bunyan | Phone 06 765 0917

Open: Monday - Friday 10.30 am - 4.00 pm Saturday - Sunday 10.30 am - 3.00 pm

Website: www.percythomsongallery.org.nz | Facebook: Percy Thomson Gallery

Fenton Street Art Collective - Autumn Exhibitions

Simeon Patience: Our Land - Photography

21 February - 18 March 2020

This Auckland based photographer has a passion for photography and an eye for finding the magic in nature.

Weekend Workshop: Ross Whitlock: Plein Air Painting

7 & 8 March 2020. Saturday \$25, Sunday \$50 per person.

Contact the Gallery for more information and to register.

Jo Stallard: Pas de Deu: 3 April - 7 May 2020

Resident painter Jo Stallard presents dynamic Shakespearean figures.

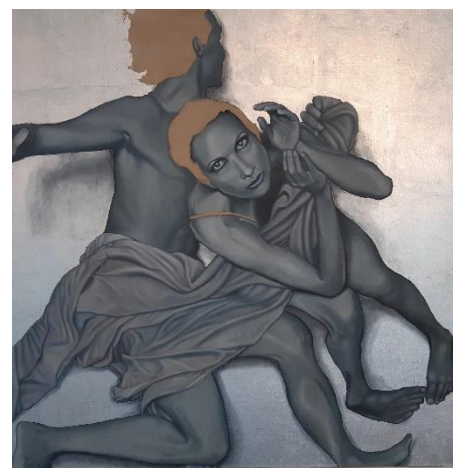
In April, Fenton Street will celebrate 100 years of the Egmont Chambers.

MB Stoneman: 8 May - 11 June 2020

Fine art printmaker based in Pātea, demonstrating diverse processes and subjects.

Weekend Workshop: MB Stoneman: Introduction to Drypoint Etching

Sunday 17 May 2020. Full details and costs available beginning of April.



Juliet & H by Jo Stallard

11 Fenton Street, Stratford | Facebook: Fenton Street Art Collective | Email: fentonartscollective@gmail.com

Open: 8.00am – 3.00pm Mon – Thurs, 8.00am – 9.00pm Friday, 9.30am – 2.00pm Weekends | Phone: 021 0299 2839

Puke Ariki - Autumn Exhibitions

The Mechanical Circus

Until 26 April 2020

For ages five to 95 and everyone in between, this exhibition is all about exploring the mechanics of toys and automata. Over 20 interactive exhibits that put a modern twist on the golden days of fairgrounds and travelling circuses.

Redecorating Taranaki - Creating new community taonga

Opens 4 April 2020

In 2019 the local community were invited to share ideas and design a medal for someone they think deserves to be honoured, including workshops at four South Taranaki LibraryPlus branches. Taking inspiration from these sessions and from objects in the museum's storeroom, New Plymouth jewellers Jennifer Laracy and Sam Kelly have created ten new awards that represent what we value in Taranaki today. Crafted using a range of jewellery-making techniques and materials, the new awards in this exhibition will say a big thanks to everyone who makes our region such a special place.



Therapeutic Agent – Shannon Novak

Opens 4 April 2020

A new commissioned work by New Plymouth born artist Shannon Novak, acknowledging Taranaki's first Pride event. Situated in the hallway that leads to the air bridge, the windows will be transformed into contemporary stained-glass windows, using geometric forms and bright colour to symbolise a new era of visibility and support for the local rainbow community. The light of the present will shine through the windows onto the surface of the past, gently healing open wounds.

Home Work: Taranaki Art 2020

16 May – 16 August 2020

Home Work is an exhibition celebrating the vibrant art scene the Taranaki region is known for and brings together artwork created right around the mouna, acknowledging the vital role art continues to play in forming a vibrant community. The theme for *Home Work 2020* is Tuku Iho, raising awareness of traditions that are passed down through generations. For a full list of lectures, school holiday programmes, events, workshops and regular groups, please visit the website.

Puke Ariki, 1 Ariki Street, New Plymouth | Phone: 06 759 6060

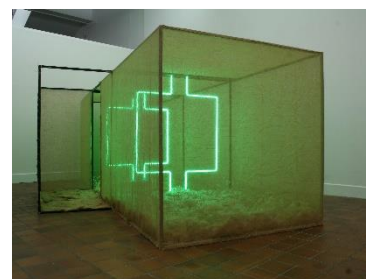
Website: www.pukeariki.com | Facebook: Puke Ariki: Museum-Library-Visitor Information

Govett-Brewster Art Gallery/Len Lye Centre

Ruth Buchanan: The scene in which I find myself / Or, where does my body belong

Until 22 March 2020

An exhibition featuring close to 300 works from the Govett Brewster Collection; the most artworks shown at one time at the Gallery since it opened in 1970. The summer exhibition is the first event to mark the 50th year of New Zealand's contemporary art museum in New Plymouth. It's also a critical interrogation of the Govett-Brewster Collection, showing artworks from 190 artists. Check the website for talks, tours, workshops, hands-on art making and cinema screenings offered. Free entry for New Plymouth District residents, Gallery Friends and Under 16's. Seniors \$10. Everyone else \$15.



Govett-Brewster Art Gallery/Len Lye Centre, Queen Street, Ngāmotu New Plymouth | Phone: 06 759 6060

Open: Seven days 10.00 am – 5.00 pm. Closed Christmas Day | Website: www.govettbrewster.com



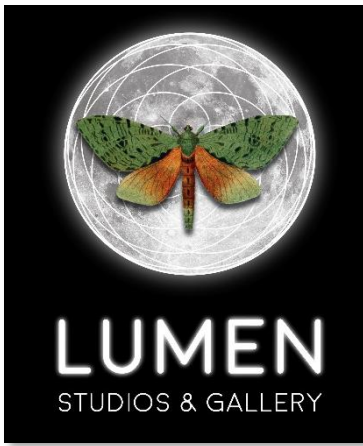
Artists Open Studios - Whanganui 2020

21 & 22 March, 28 & 29 March 2019

Open: 10.00 - 4.30pm daily

Artists Open Studios is your gateway to experiencing the vibrant and diverse arts community of Whanganui and its surrounding districts. Home to many established, world renown and emerging artists, the city is a premier arts destination for New Zealand.

For full listings, event information or to download or purchase a booklet, visit: www.openstudios.co.nz



LUMEN Studios & Gallery News

A new coastal Taranaki art gallery holds the environment at its core. Based at the old Cheese Factory in Tataraimaka, Lumen Studios & Gallery opened its doors to the public in October 2019. LUMEN is an artist-run space managed by co-founders and resident artists Janeen Page (Potter), Teresa Goodin (Collage Artist) and Alice Cowdrey (Needle Felter) who have working studios on site. The artists share a combined vision to make art and objects that reflect their own personal values and portray a wider environmental story. The public will have a chance to step into the three studios and gain insight into the artists' processes during the Taranaki Arts Trail in June. During 2020, the gallery will host curated exhibitions as well as showcase the resident artists' work. The gallery's first exhibition LUMEN8 featured the work of eight Taranaki women and the group are organising a workshop and events schedule.

Autumn Exhibitions & Events

The Zodiac - Collages by Teresa Goodin: 1 February - 15 March 2020

The Goddess has Returned - New Work by Teresa Goodin: 21 March - 26 April 2020

School Holiday Arts Programme: 14 – 24 April 2020

Ko Tania ahau - Weaving Exhibition by Tania Brown: 2 - 24 May 2020

Vintage Kimono Sale: Saturday 30 May 2020

The gallery is also available to hire for exhibitions, workshops and events.

LUMEN Studios & Gallery, 1729 South Road, Tataraimaka | Facebook: LUMEN Studios & Gallery | Phone: 06 7524986

Email: lumen.studios.gallery@gmail.com | Instagram: [lumen.tataraimaka](https://www.instagram.com/lumen.tataraimaka)

Open: Saturday & Sunday 10.00 am - 4.00 pm or by appointment

The Big Idea

The Big Idea is an online hub for artists of all genres. The Big Idea provides you with daily news updates, the **latest jobs and opportunities**, **events** as well as **ideas and inspiration** from across the creative industries to help you create your own success. With over 50,000 members; 1.4 million page views, over 26,000 social media followers and 1.8 million email newsletters sent each year, they are the largest, and the leading online resource for the arts in New Zealand and the most effective place to advertise opportunities.

Website: www.thebigidea.nz



Would you or your group like to have information included in the next *State of the Arts*? Please send concise text and photographs for the Winter Edition (June, July, August) to: Michaela Stoneman, Arts Co-ordinator: michaela.stoneman@stdc.govt.nz

Send information by: Tuesday 19 May 2020

Publish date: Tuesday 2 June 2020

If you would like to unsubscribe to *State of the Arts*, please [email Unsubscribe](#) in the subject line.



South Taranaki

Alive with opportunity